

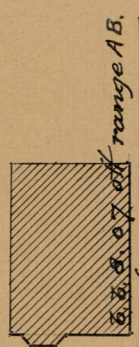
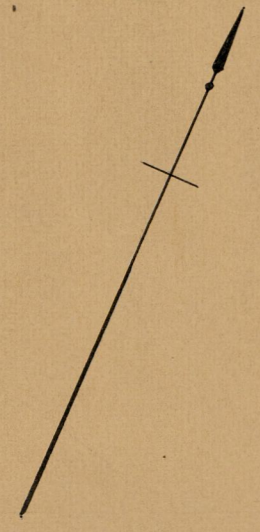
S. S. Duffee Eng.

FBB-XIX-15

PROVIDENCE, R.I.
CITY ENGINEER'S OFFICE
STREET LINE DEPT.
Aug 9 1895
024308

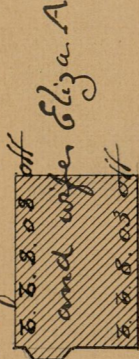
PLAT OF
REGENT AVENUE
FROM CORNELL ST. TO ITS EASTERLY TERMINATION
SCALE 40 FEET PER INCH.

385.38
385.77
2771.10
385.57



b. b. 0.07 off range AB.
b. b. f. 0.02 on

Alfred R. McCool



b. b. 0.08 off
and wife Eliza A.

b. b. 0.03 off

William F. Higgins
and wife Mary Jane.

Michael J. Welch

b. b. f. 0.21 on

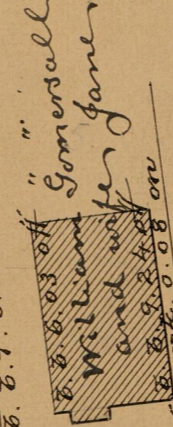


William and heirs of
Robert Miller.

b. b. 0.04 on
b. b. f. 0.14 on R. Ave.
granite bound 0.04 off "

LISBON ST.

b. b. f. 0.21 on R. Ave.



William Gomersall
and wife Jane

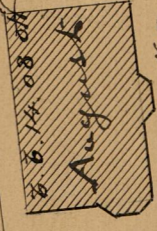
b. b. 0.03 off
b. b. 0.08 on
face pt. 0.08 on

William Gomersall

post. 0.50 off

William Oscar Cornell

post 0.02 on



Augusta Lundstedt.

post 0.05 off R. Ave.

DA = 50.22
84° 36' 30"

50

REGENT AVENUE

AB = 385.38

DC = 385.77

50

CB = 50.26
84° 10'

Wolcott St.
CORNELL ST.

cor. fence 0.70 on R. Ave

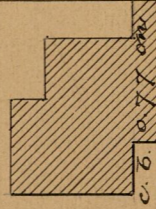
William Oscar Cornell

b. b. p. 1.19 on

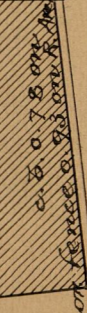
b. b. p. 1.14 on

cor. shed 0.72 on

cor. shed 0.8 on



c. b. 0.77 on



c. b. 0.78 on

OFFICE No. 12669
DRAWER " 82
SHEET " A-24