

CITY ENGINEER'S OFFICE
STREET LINE DEF.
Jan. 28, 1879
04835

Providence R.I.
This map accompanies our
report of this date.

MAP OF
BENEFIT ST.
FROM NORTH MAIN ST. TO BOWEN ST.
IN THREE SHEETS

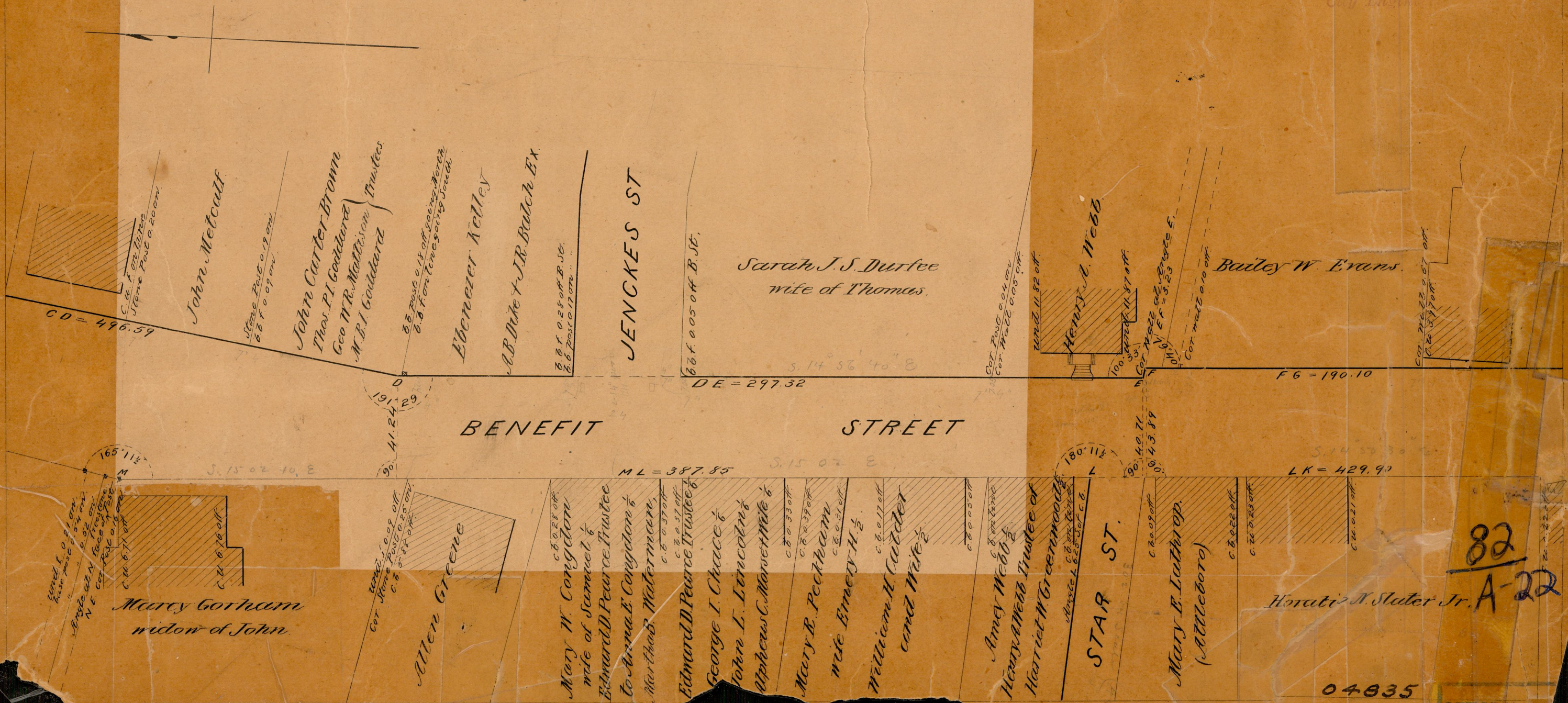
City Engineer's Office
Jan. 28, 1879.

Scale 40ft. per inch.

Jos. A. Aladding

Committee.

04835
82
A-22



John Metcalf
Stone Post 0.17 on
88 f. 0.09 on

John Carter Brown
Thos. P. Goddard
Geo W. R. Mathison
M. B. J. Goddard Trustees

Ebenezer Kelley
A. B. Duke + J. R. Bulch Ex.
88 f. 0.25 off B. St.
88 f. post 0.17 on

JENCKES ST

Sarah J. S. Durfee
wife of Thomas.

Henry A. Webb
100. 11. 82 off.
100. 11. 87 off.
Cor. Wall 0.04 on
V. E. = 3.23
Cor. Wall 0.10 off.

Bailey W. Evans.

BENEFIT STREET

Mary Gorham
widow of John
165' 11 1/2
90' 41.24 29
S. 15 02 40 E
C. 11. 6. 71 off.
C. 11. 6. 76 off.

Allen Greene
Cor. Stone Post 0.09 off
C. 8. 5. 14 off.

Mary W. Congdon
wife of Samuel
Edward D. Pearce Trustee
to Anna E. Congdon &
Martha B. Waterman
C. 6. 0. 37 off.

George I. Chace
John L. Lencoln
Alpheus C. Morseth &
C. 8. 0. 33 off.
C. 8. 0. 37 off.

Mary R. Peckham
wife Emery H. Jr.
William H. Cutler
and wife
C. 8. 0. 17 off.
C. 8. 0. 05 off.

Amy Webb
Henry A. Webb Trustee of
Marriet W. Greenwood
C. 8. 0. 09 off.
C. 8. 0. 23 off.

STAR ST.

Mary E. Luthrop
(Attleboro)
C. 8. 0. 09 off.
C. 8. 0. 23 off.

Horatio N. Slater Jr.

04835

82-A-22

OFFICE No.
DRAWER
SHEET

OFFICE