

Providence R.I.
This map accompanies our report
of this date.

MAP OF *Lenox Ave*
PACIFIC ST.
FROM BROAD ST. TO HAMILTON ST.

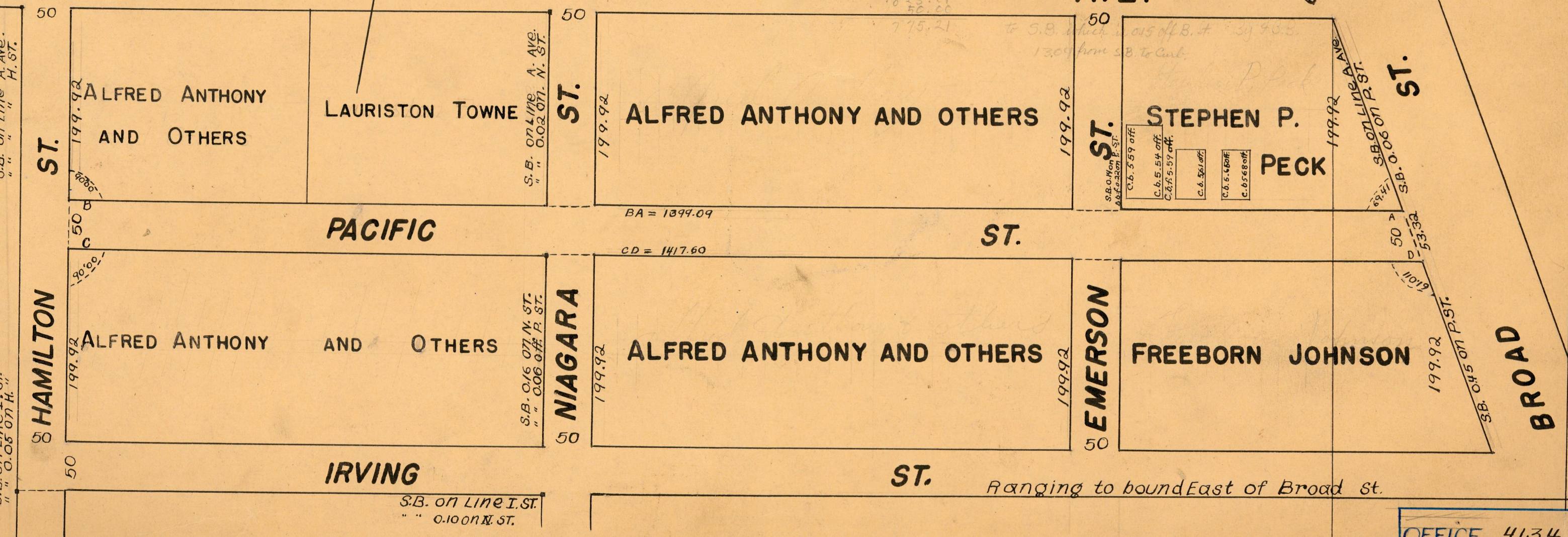
City Engineer's Office
May, 1879

Scale 100ft. per inch
COMPARED. *Fredrick A. Hudding* Asst Engineer
Changed to Lenox Ave. Dec. 7, 1893

_____ } Committee

1399.09
1417.60
212816.69
1408.34

224.96
600.21
825.81
50.00
775.21



OFFICE 4134
DRAWER 82
SHEET A-19

STREET LINE DEPT.

May 1879
04969

FBB-III-124

OFFICE No. 413
DRAWER " 80
SHEET

Providence R. I.
This map accompanies our report
of this date

MAP OF
Lenox Ave
PACIFIC ST.

City Engineer's Office
May, 1879.

FROM BROAD ST. TO HAMILTON ST.

Scale 100 ft. per inch
COMPARED.

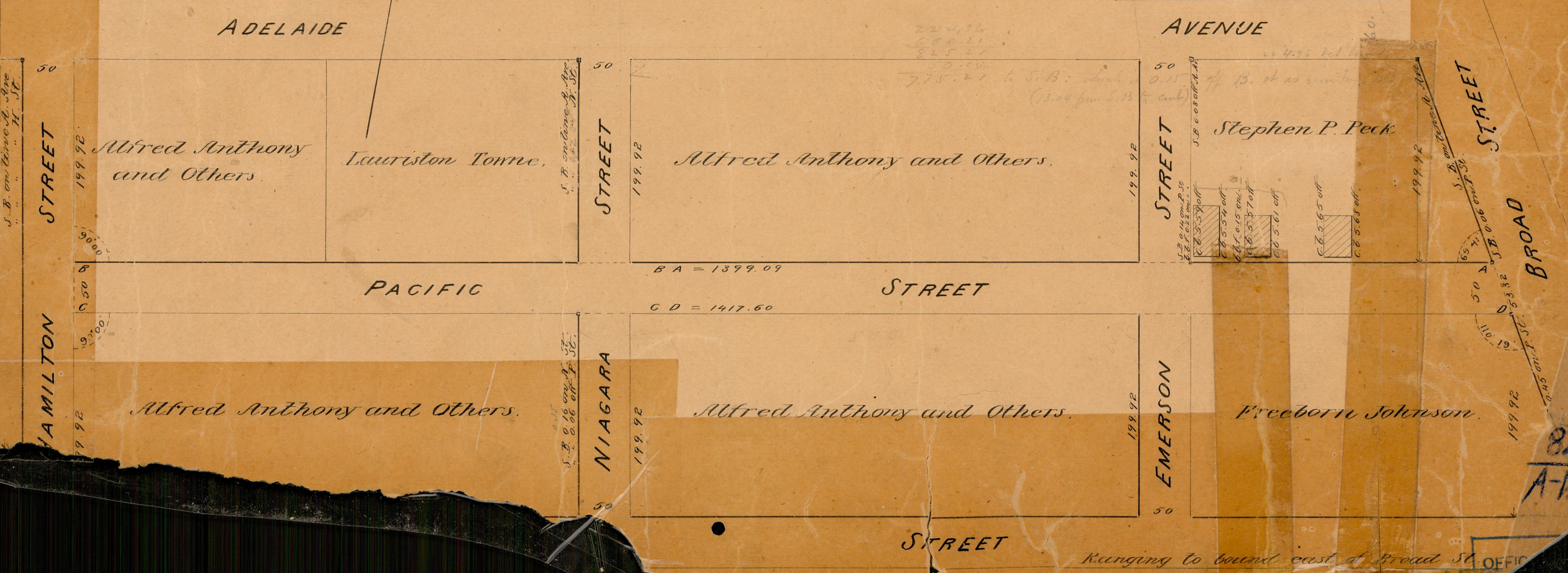
Fredric Alshading
Ass't Engineer

EXAMINED.
Changed to Lenox Ave Dec. 7 1893
City Engineer.

Committee

04969
82
A-19

1399.09
1417.60
2816.69
1408.59



82
A-19

Ranging to bound east of Broad St. OFFIC