

Providence R.I.
This plat accompanies
our report of this date.

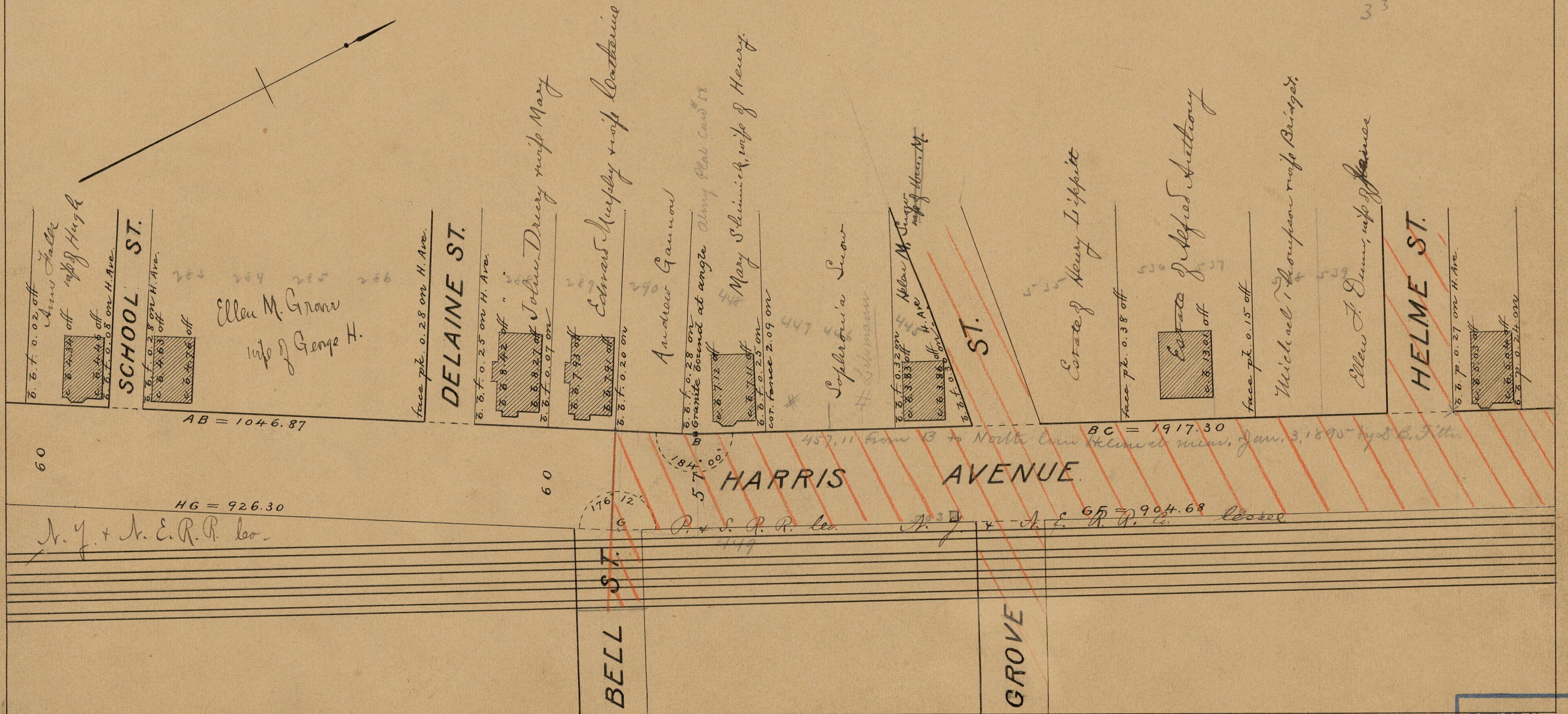
PROVIDENCE, R. I.
CITY ENGINEER'S OFFICE
STREET LINE DEPT

Oct. 13. 1891

018481

PLAT OF
HARRIS AVENUE
FROM BROADWAY TO AT WELLS AVE.
IN FOUR SHEETS
SCALE 60 FEET PER INCH.

33



60

AB = 1046.87

HG = 926.30

60

HARRIS AVENUE

BC = 1917.30

GF = 904.68

| | |
|------------|-------|
| OFFICE No. | 7612 |
| DRAWER | 82 |
| SHEET | A-147 |