

PROVIDENCE, R. I.
CITY ENGINEER'S OFFICE.
STREET LINE DEPT.

MAP OF

GRANT STREET

FROM KNIGHT ST. TO CARPENTER ST.

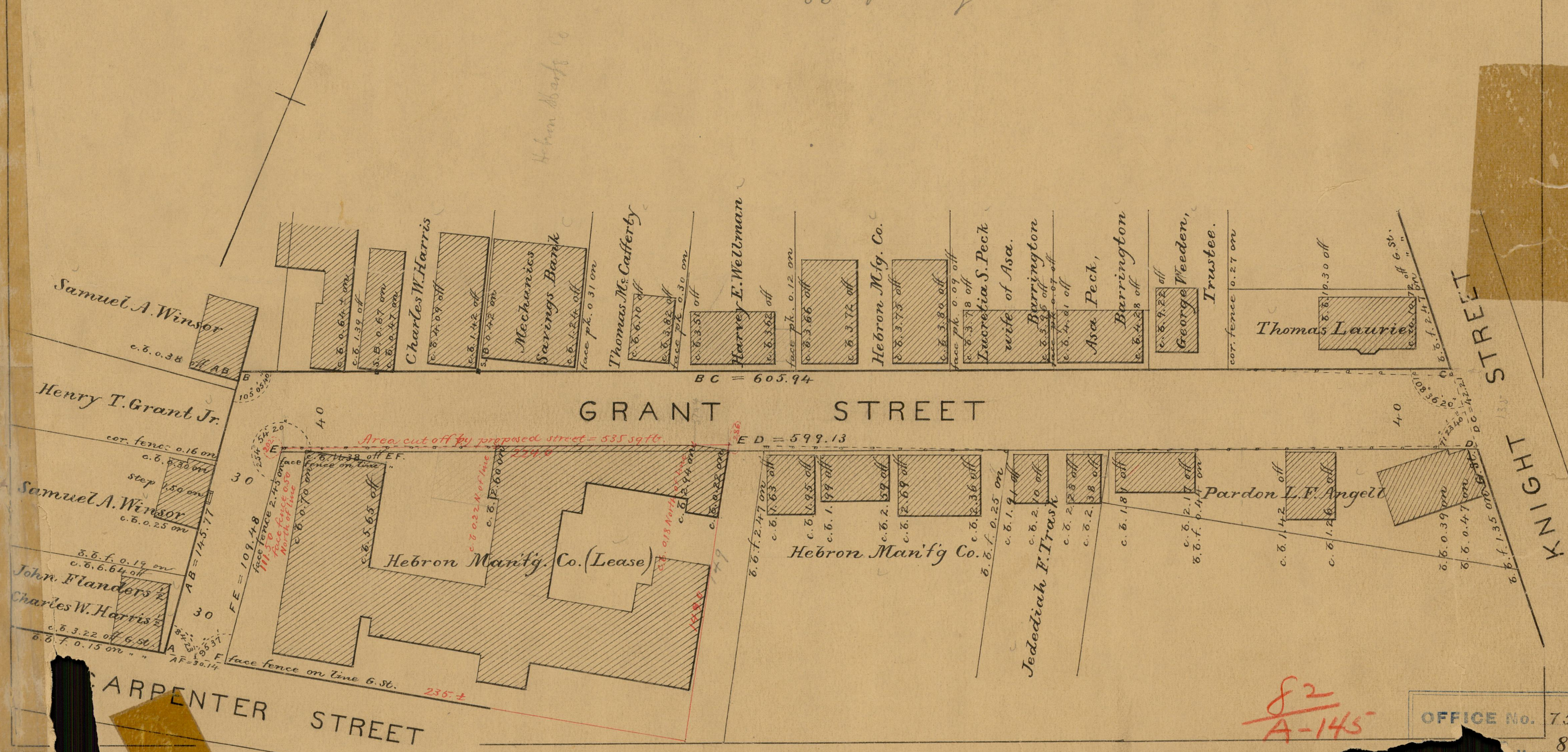
SCALE 50 FEET PER INCH.

Oct. 11, 1883.

09329

Providence R.I.
This map accompanies
our report of this date.

See 81 ^F/₅₆ for lay out.



82
A-145

OFFICE No. 7596

82

Note - The red lines and figures correspond with original deed of land leased by H.W. Co.