

PROVIDENCE, R. I.
CITY ENGINEER'S OFFICE.
STREET LINE DEPT.

Mar. 22, 1883.

08719

Providence R.I.

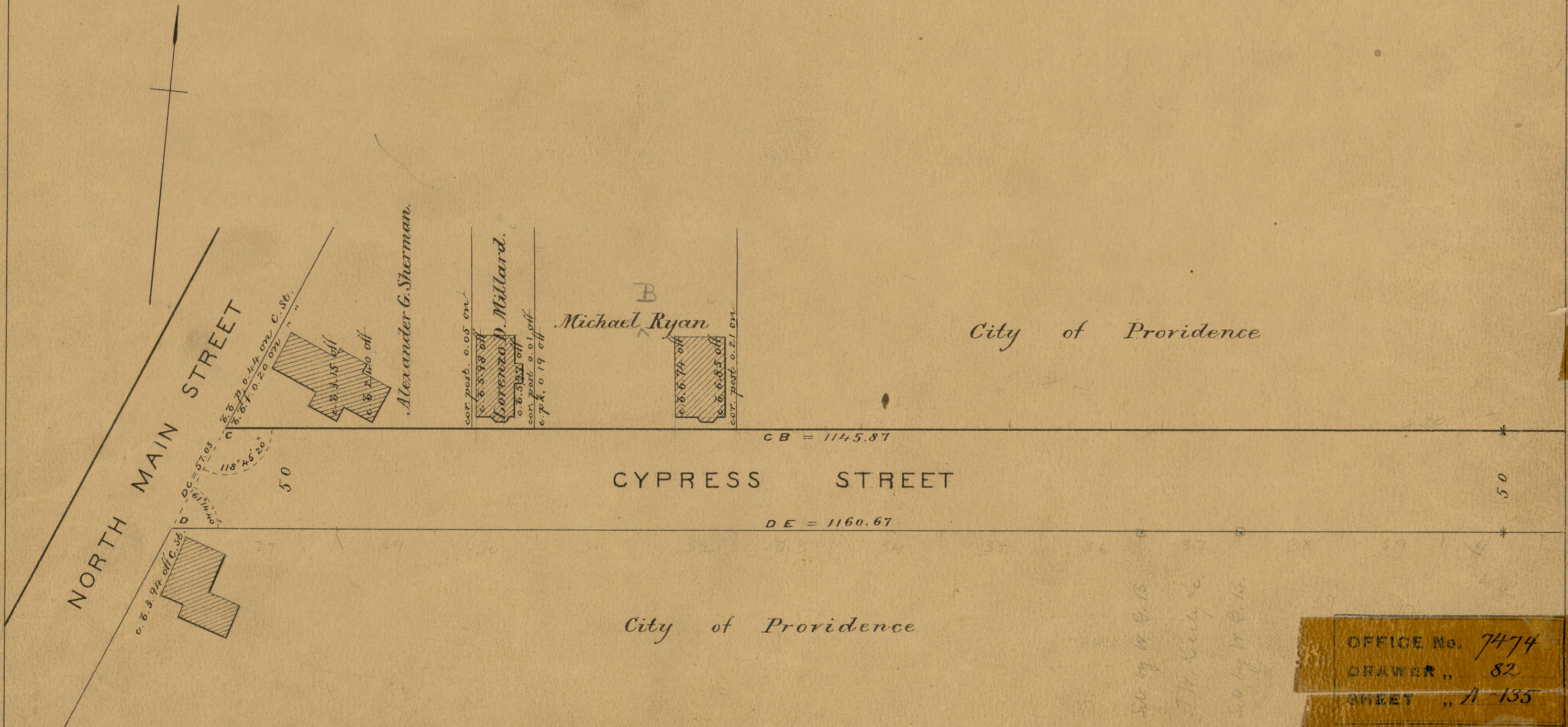
This map accompanies our
report of this date.

MAP OF
CYPRESS STREET

FROM CAMP ST. TO NORTH MAIN ST.

IN TWO SHEETS.

SCALE 50 FEET PER INCH.



OFFICE No. 7474
DRAWER ,, 82
SHEET ,, A 135