

CITY ENGINEER'S OFFICE.
STREET LINE DEPT.

Jan. 2. 1883.

08667

Providence R.I.

This map accompanies our
report of this date.

MAP OF GEORGE STREET

FROM BENEFIT ST. TO GANO ST.

IN EIGHT SHEETS.

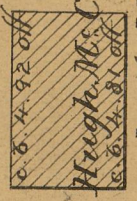
SCALE 40 FEET PER INCH.

Committee

Changed to East George St.

Fannie Sprague

cor. fence 0.03 off

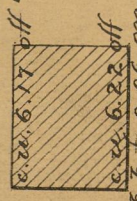


Hugh Mc. Cutchaen
and wife Margaret

Hugh Mc. Cutchaen

b. b. f. 0.21 on

William J. Spencer



William Knowles

Arthur F. Dexter

PQ = 903.02

GEORGE STREET

OR = 964.17

50

50

GANO ST.

82A
731



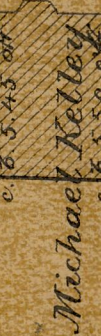
John W. Prouty

cor. pk. 0.30 off

Mary Peck
wife Charles H.

John T. Gaskin
of Newport

b. b. f. 0.28 off



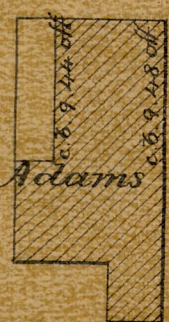
Michael Kelley
and wife Eliza

b. b. f. 0.38 off

West Providence
Land Co.

Benjamin B. Adams

b. b. p. 0.36 on



Edward S. Derine

cor. 3.81 off

b. b. f. 0.76 off

Timothy J. Sullivan

b. b. p. 0.12 on



OFFICE No. 6996

DRAWER 82

SHEET A-131