

196
Updike + Moore / Plat East 253
which shows bounds

F.B.B.-VT-136

MAP OF

MOORE STREET

FROM BROAD ST. TO UPDIKE ST.

SCALE 60 FEET PER INCH.

STREET LINE DEPT

Oct. 12 1882

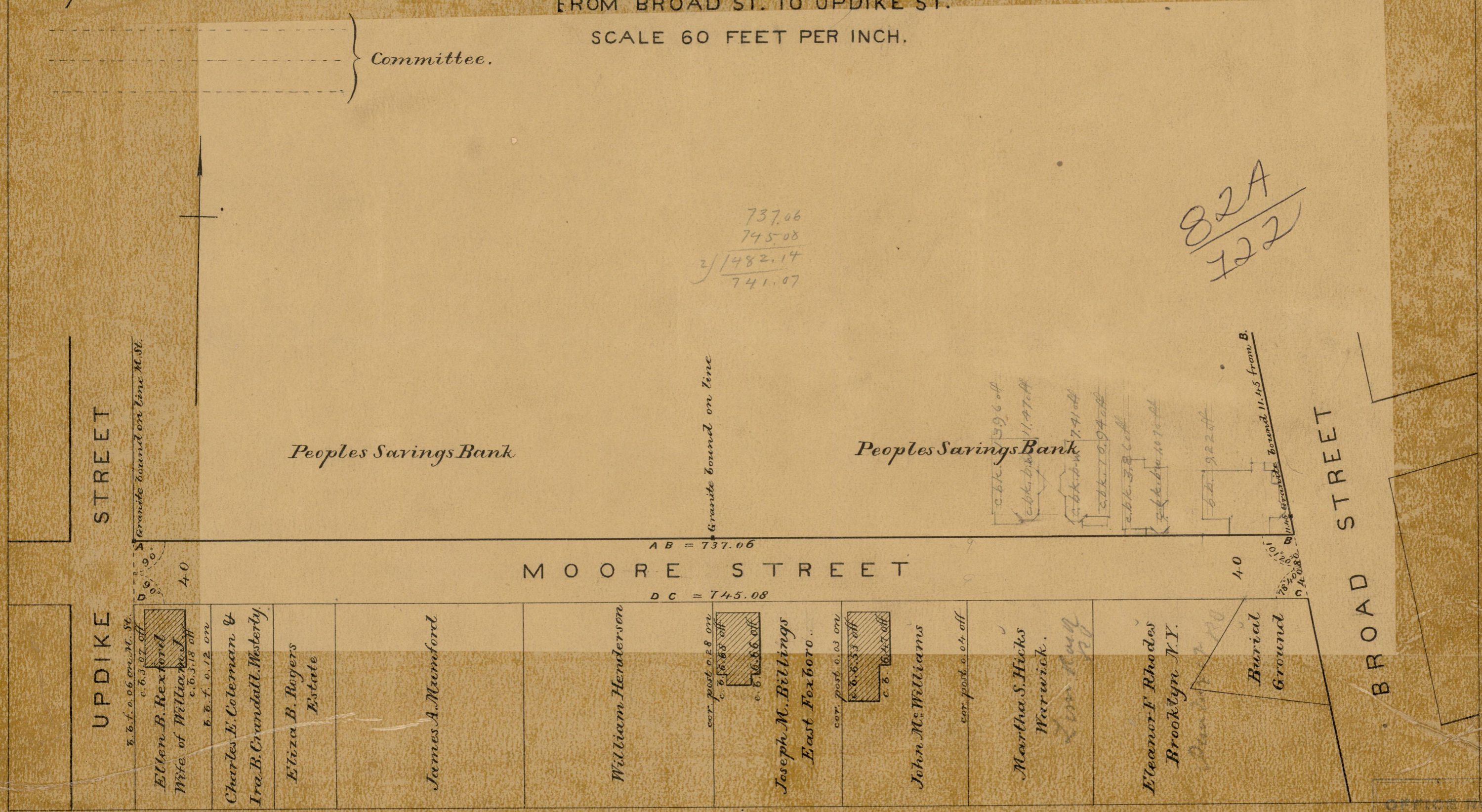
08111

Providence R.I.
This map accompanies our
report of this date.

Committee.

737.06
745.08
2/1482.14
741.07

82A
122



UPDIKE STREET

UPDIKE STREET

BROAD STREET

BROAD STREET

MOORE STREET

Peoples Savings Bank

Peoples Savings Bank

Burial Ground

Granite bound on line M St.

Granite bound on line

AB = 737.06

DC = 745.08

S. E. f. 0.06 on. 10. St.

c. 6.3.07 off

Ellen B. Rexford
Wife of William S.

c. 6.3.18 off

S. E. f. 0.12 on

Charles E. Coteman &
Ira B. Candall. Westerly.

Eliza B. Rogers
Estate

James A. Mumford

William Henderson

cor. post. 0.28 on

c. 6.8.88 off

c. 6.16.86 off

Joseph M. Billings
East Foxboro..

cor. post. 0.03 on

c. 6.8.33 off

c. 6.16.47 off

John M. Williams

cor. post. 0.04 off

Martha S. Hicks
Warwick.

Eleanor F. Rhodes
Brooklyn N.Y.

101.20
78.20
140.80

4-0

4-0

c. 6.6.1396 off

c. 6.6.11.47 off

c. 6.6.7.41 off

c. 6.6.10.94 off

c. 6.6.3.26 off

c. 6.6.10.70 off

c. 6.6.9.22 off

c. 6.6.11.45 from B.

OFFICE NO. 6983
DRAWER 82
SHEET A-122