

Mar. 7, 1882.

MAP OF

# MAWNEY STREET

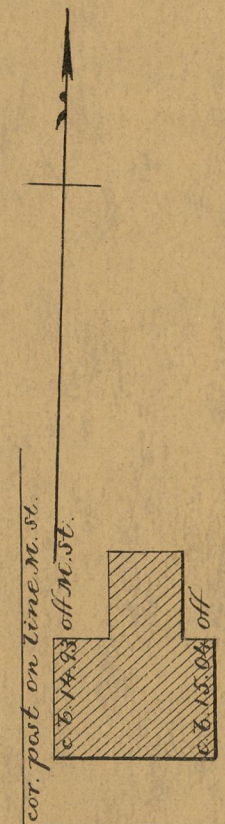
FROM GREENWICH ST. TO BUCKLIN ST.

SCALE 40 FEET PER INCH.

Providence R.I.  
This map accompanies  
our report of this date.

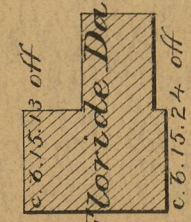
Committee.

BUCKLIN STREET



Josephine Daboll

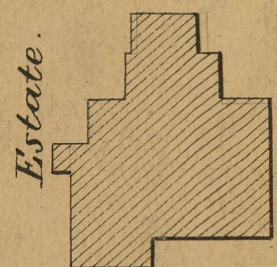
cor. post. 0.10 off



Floride Daboll

cor. post. 0.18 off

Caroline C. Daboll  
Wife of William F.

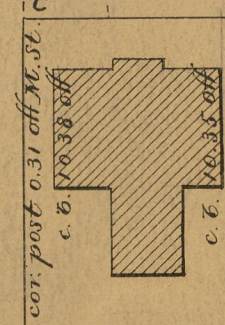


cor. post. 0.32 off

AB = 492.06

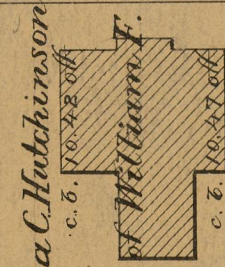
MAWNEY STREET

CD = 480.92



David L. Daboll

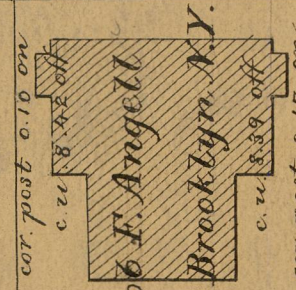
cor. post. 0.33 off



Emma C. Hutchinson  
Wife of William F.

cor. post. 0.37 off

Lyman H. Eddy

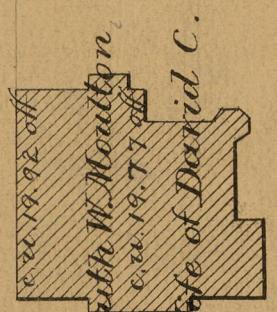


Job F. Angell  
Brooklyn N.Y.

cor. post. 0.17 on

Sullivan Fenner

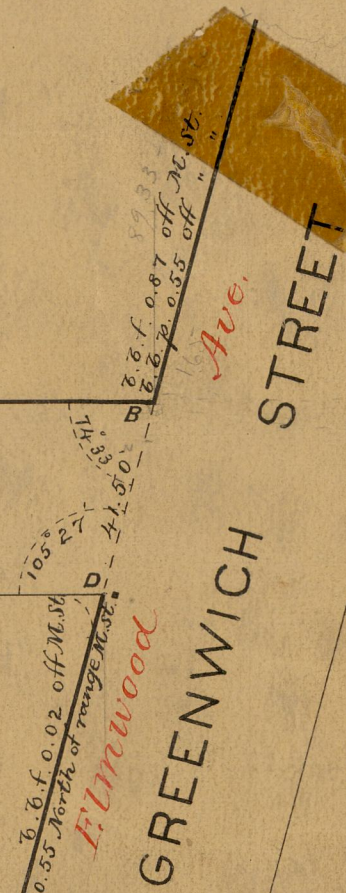
b. b. p. 0.35 on



Ruth W. Moulton  
Wife of David C.

Charles Sydney Smith

40



GREENWICH STREET

492.06  
480.92  
2972.98  
486.49

139  
153  
161

OFFICE No. 5700  
DRAWER ,, 82  
SHEET A-1

82  
A-115