

CITY ENGINEER'S OFFICE.
STREET LINE DEPT.

Oct. 3, 1881

07113

MAP OF

LEXINGTON ST.

FROM ELMWOOD AVE TO MELROSE ST.

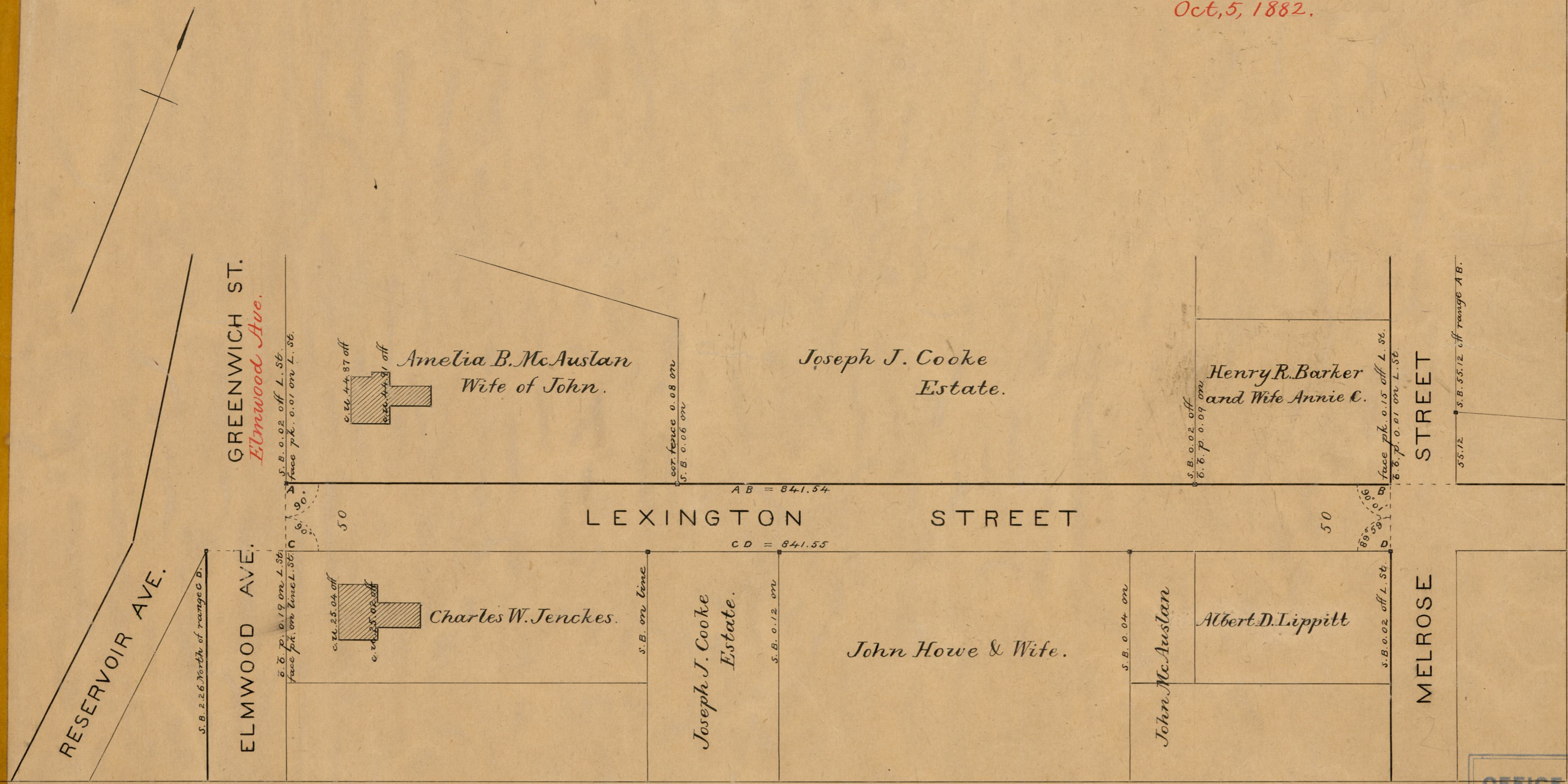
SCALE 80 FEET PER INCH.

Providence R.I.
This map accompanies
our report of this date.

Committee.

Changed to Lexington Avenue.

Oct. 5, 1882.



OFFICE No. 5595
 DRAWER " 82
 SHEET " A-106