

PLAT OF TRIANGULAR PARCELS OF LAND AT SOUTHEASTERLY CORNERS OF

STILLMAN AND GASPEE STREET

AND

RAILROAD AND GASPEE STREET

SCALE 10 FEET PER INCH

OPENED AND REPAIRED BY RESOLUTION OF THE BOARD OF ALDERMEN

FEBRUARY 19, 1925

PROVIDENCE, R.I.
CITY ENGINEER'S OFFICE
CITY PROPERTY DEPT.
JUNE 30, 1924
047054

PROVIDENCE, R.I.
CITY ENGINEER'S OFFICE
STREET LINE DEPT.

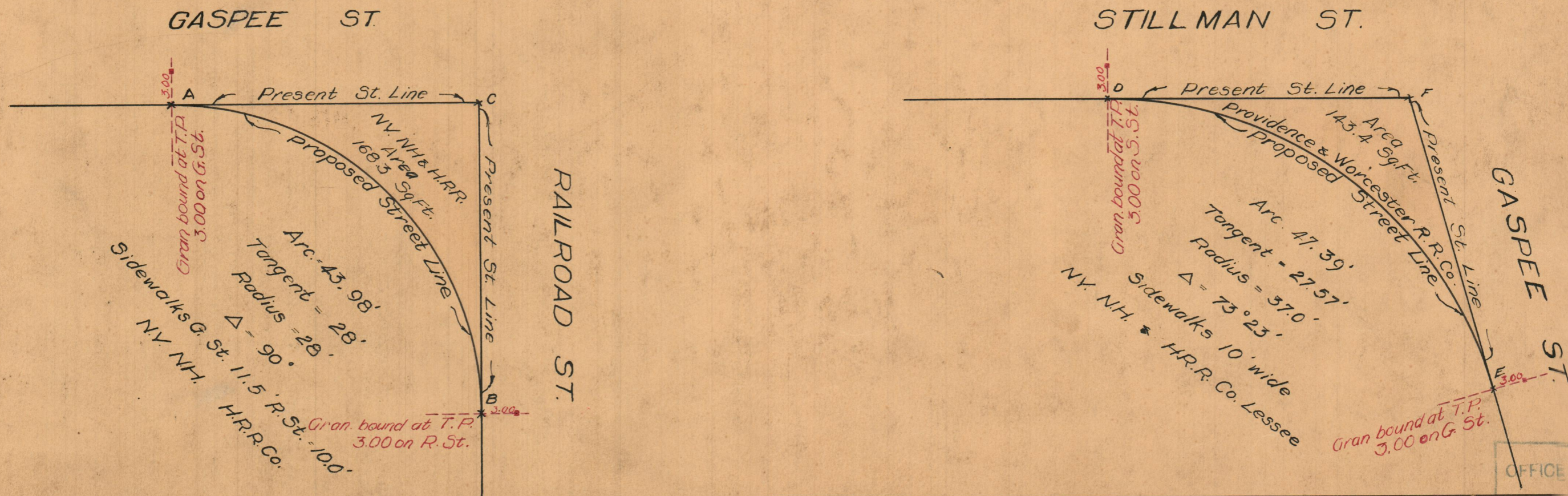
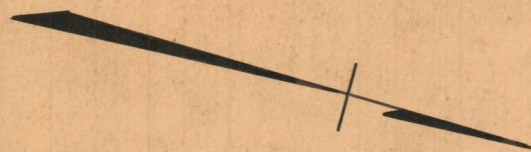
February 10, 1932

054253

Note:

The areas opened and repaired as public highways is indicated by the letters ABC and DEF.

The lines thus fixed conform with the plat recorded in Plat Book 37, page 17, and with deeds recorded in Deed Book 663, pages 274, and 277 in the office of the Recorder of Deeds.



OFFICE No. 23001
DRAWER " 81
SHEET " J-98