

# PLAT OF PEMBROKE AVENUE

FROM CHAD BROWN ST. TO EATON ST.

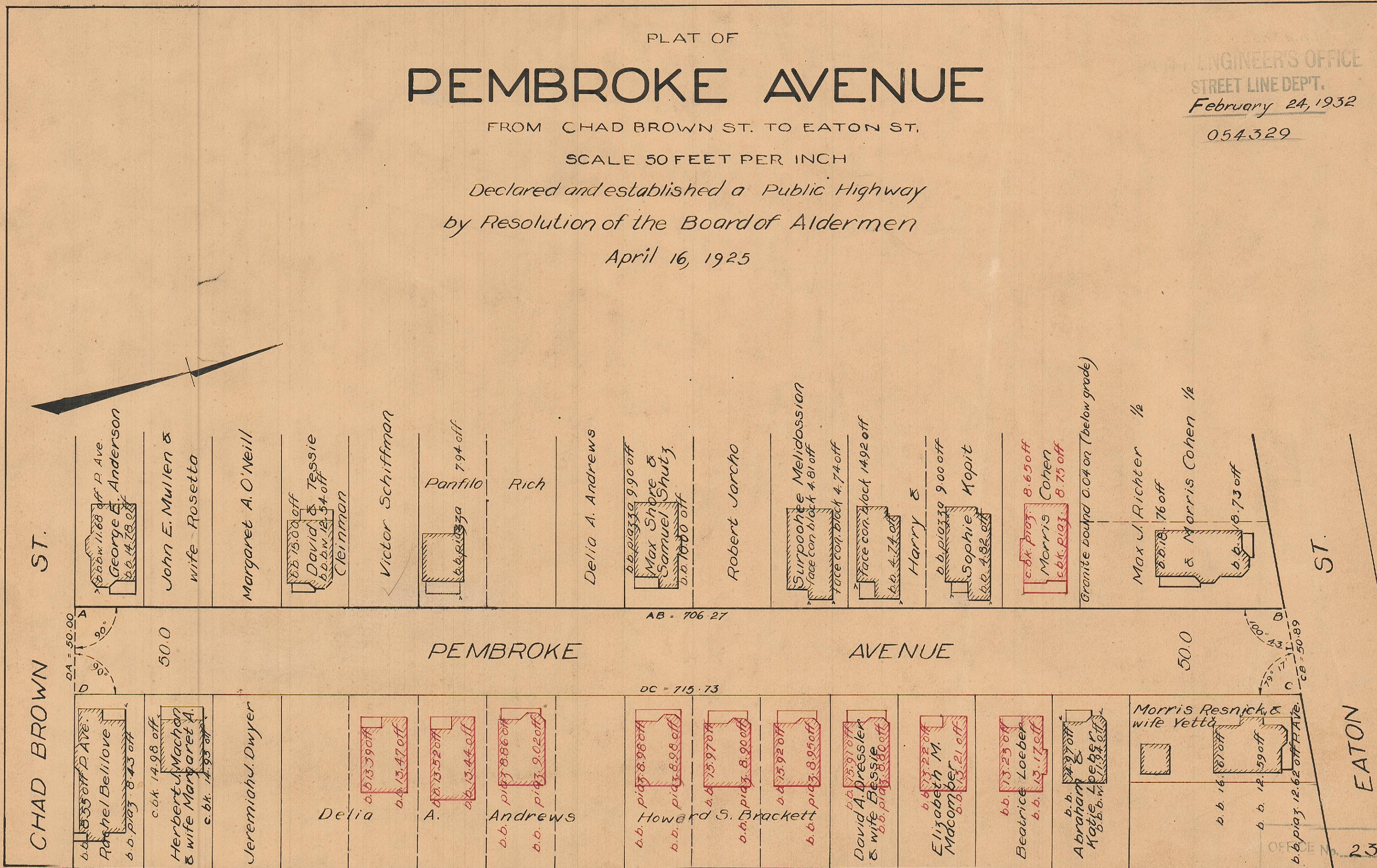
SCALE 50 FEET PER INCH

*Declared and established a Public Highway  
by Resolution of the Board of Aldermen  
April 16, 1925*

ENGINEER'S OFFICE  
STREET LINE DEPT.

February 24, 1932

054329



OFFICE NO. 23000  
DRAWING " 81  
SHEET " J-97