

PROVIDENCE, R.I.
CITY ENGINEER'S OFFICE

STREET LINE DEPT.

SEPT. 18, 1922

045929

PLAT SHOWING WIDENING OF UNION AVENUE

NEAR THE SOUTHWESTERLY CORNER OF
HUNTINGTON AVENUE

SCALE 40 FEET PER INCH

Declared and Established as a Public Highway

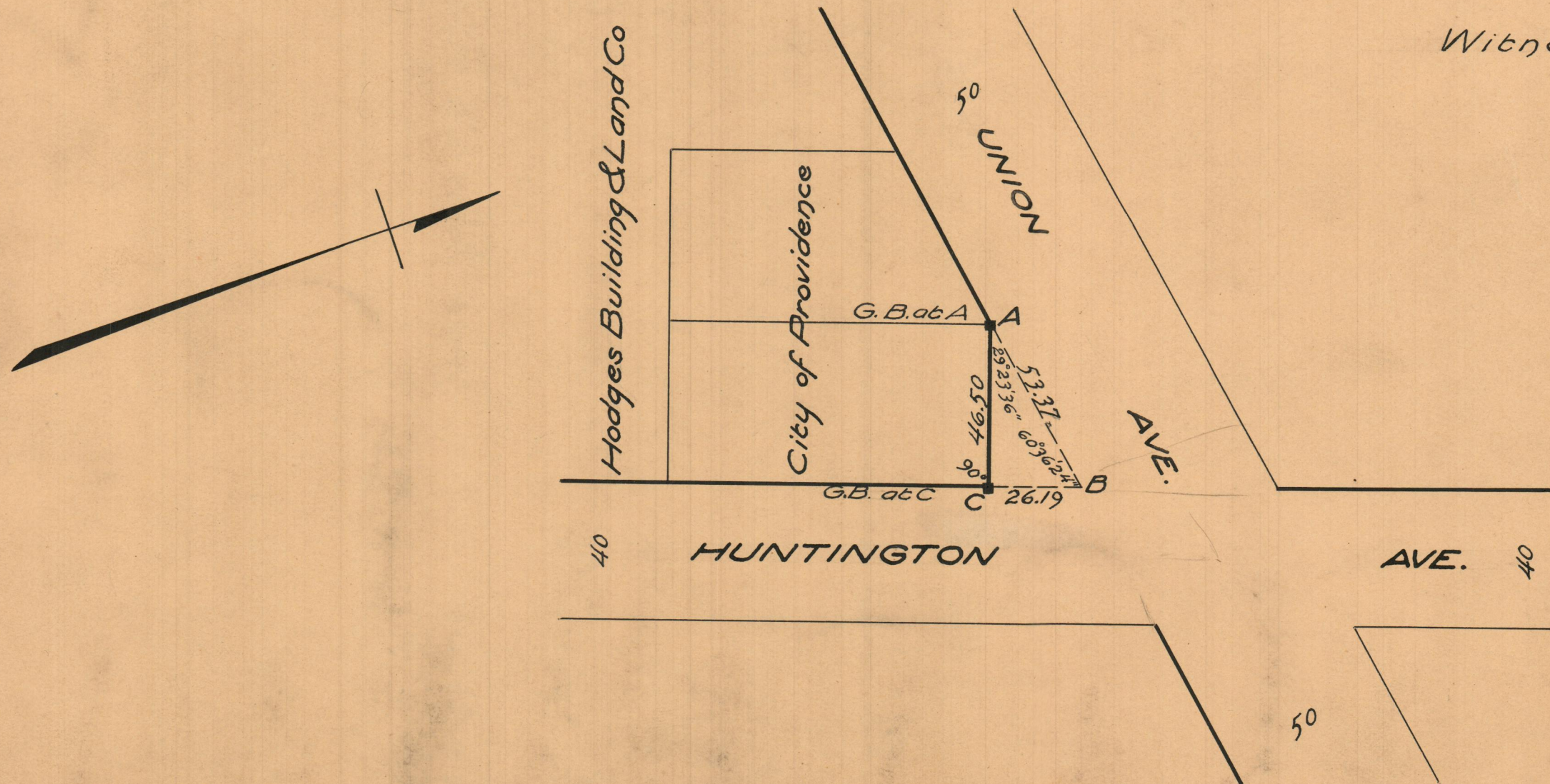
*by Resolution of the
Board of Aldermen*

October 5, 1922

NOTE:

The area declared and established as a public highway is indicated by the letters ABC and contains 609 sq.ft.

Witness City Clerk



OFFICE No.	22058
DRAWN BY	81
SHEET	J-14