

PROVIDENCE, R.I.
CITY ENGINEER'S OFFICE
STREET LINE DEPT.
November 20, 1931
054072

NOTE:

Laurel Court, as shown hereon was dedicated for highway purposes by the John R. Freeman Plat No. 3 recorded on plat card 1090 in the office of the Recorder of Deeds.
The lines of Laurel Court are marked by concrete bounds shown on said Freeman Plat and Located by stations on and offsets at right angles to the Base Line DC.

PLAT OF
LAUREL COURT
FROM EVERETT AVE. TO LAUREL AVE.

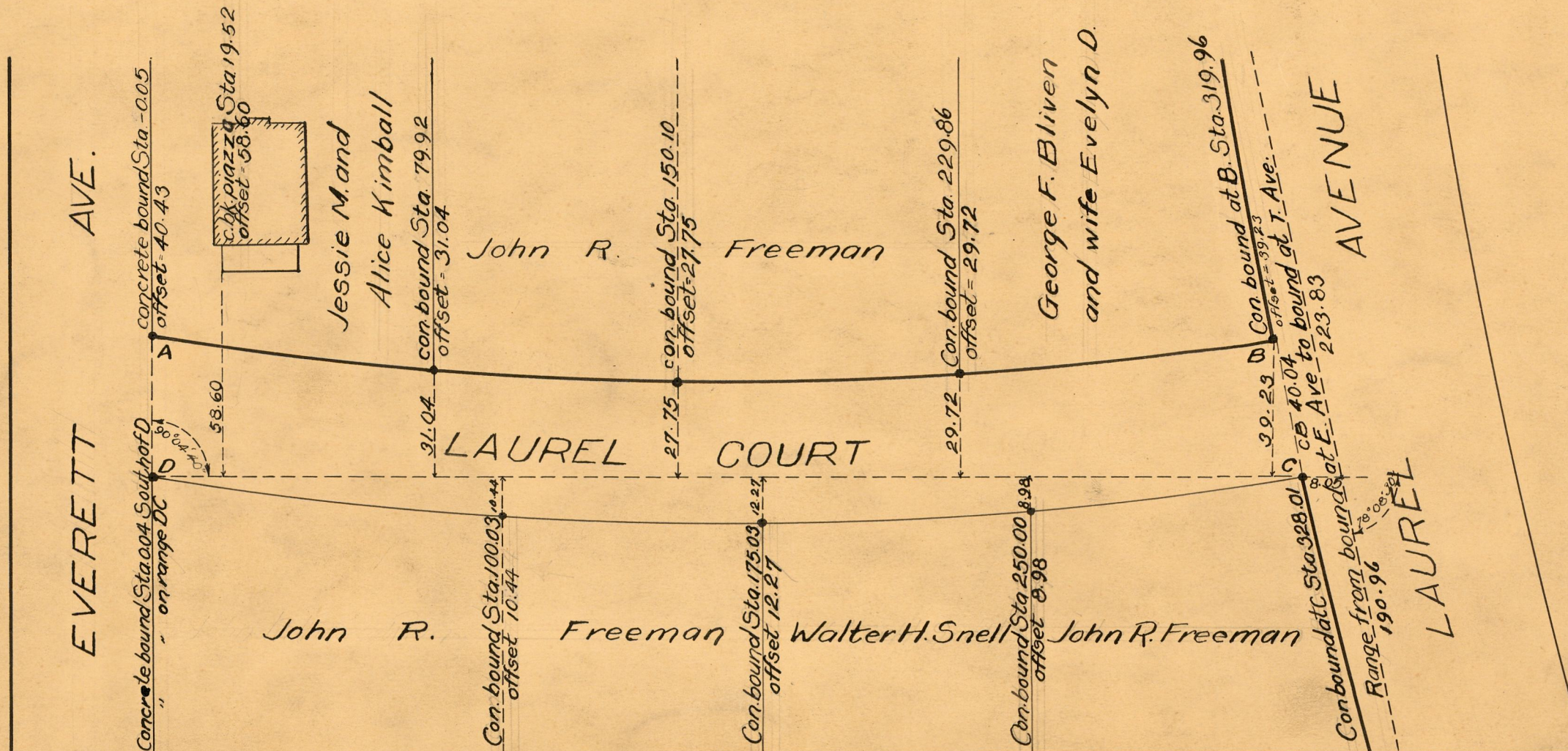
BOARD OF ALDERMEN

MARCH 19, 1925

Declared a public highway by Resolution of the
Board of Aldermen
March 19, 1925



Scale 1" = 40'



OFFICE No.	23035
DRAWER	81
SHEET	J-99