

PLAT OF TRIANGULAR PARCELS OF LAND AT SOUTHEASTERLY CORNERS OF

# STILLMAN AND GASPEE STREET

AND

# RAILROAD AND GASPEE STREET

SCALE 10 FEET PER INCH

OPENED AND REPAIRED BY RESOLUTION OF THE BOARD OF ALDERMEN

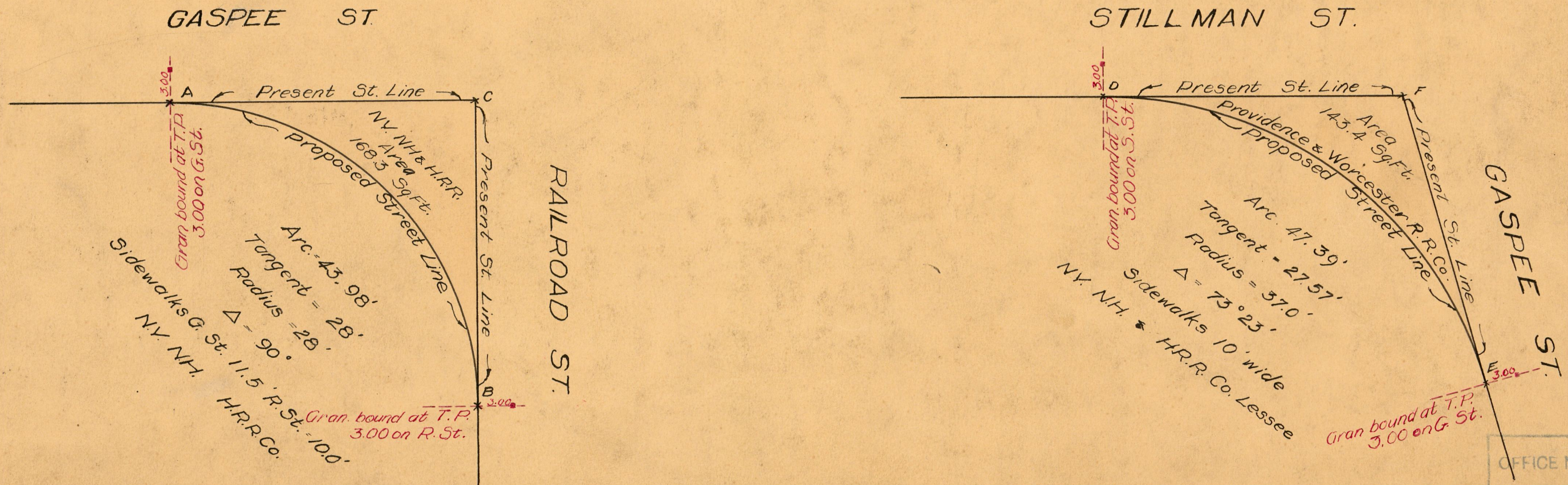
FEBRUARY 19, 1925

PROVIDENCE, R.I.  
CITY ENGINEER'S OFFICE  
CITY PROPERTY DEPT.  
JUNE 30, 1924  
047054

PROVIDENCE, R.I.  
CITY ENGINEER'S OFFICE  
STREET LINE DEPT.  
February 10, 1932  
054253

*Note:*

The areas opened and repaired as public highways is indicated by the letters ABC and DEF.  
The lines thus fixed conform with the plat recorded in Plat Book 37, page 17, and with deeds recorded recorded in Deed Book 663, pages 274, and 277 in the office of the Recorder of Deeds.



OFFICE No. 23001  
DRAWER " 81  
SHEET " J-98