

# PLAT OF PEMBROKE AVENUE

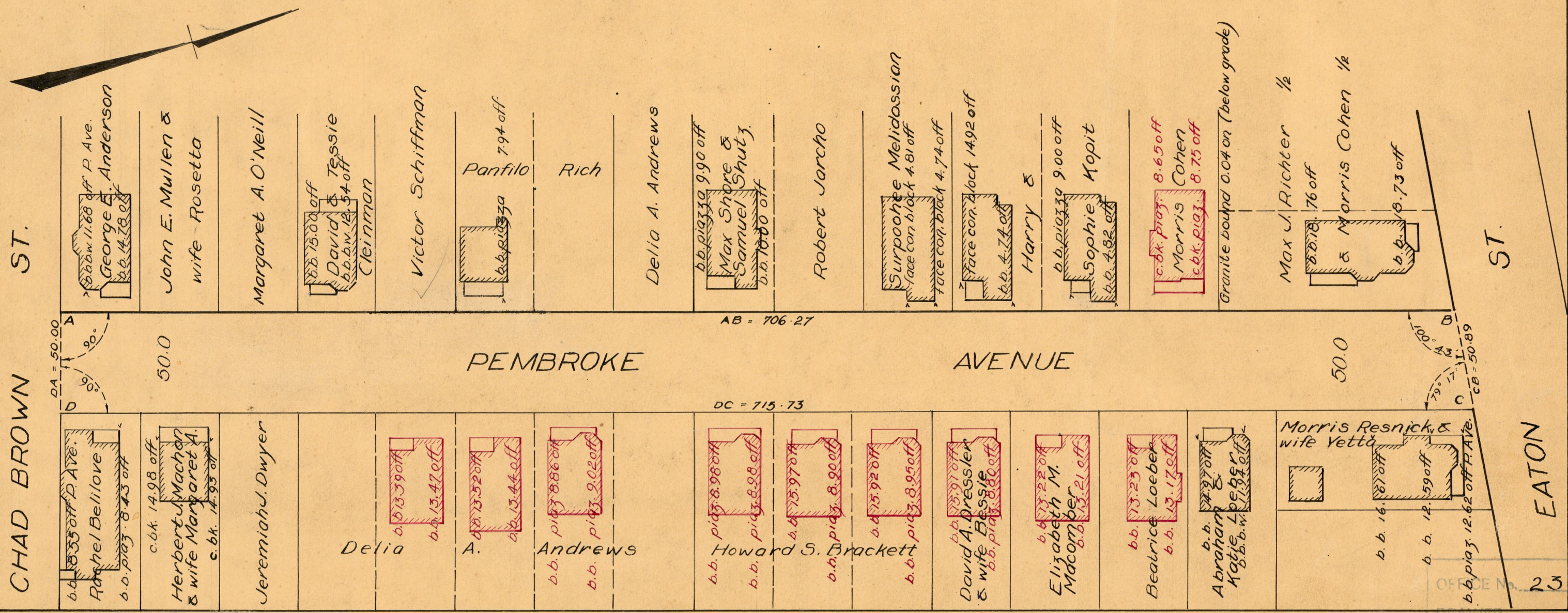
FROM CHAD BROWN ST. TO EATON ST.

SCALE 50 FEET PER INCH

*Declared and established a Public Highway  
by Resolution of the Board of Aldermen  
April 16, 1925*

ENGINEER'S OFFICE  
STREET LINE DEPT.  
February 24, 1932

054329



OFFICE No. 23 000  
DRAWER " 81  
SHEET " J-97