

PROVIDENCE, R.I.
CITY ENGINEER'S OFFICE
STREET LINE DEPT.

Apr. 11, 1932

054428

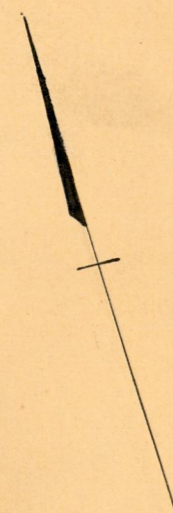
PLAT OF DICKENS STREET

FROM OAKLAND AVE. TO RUGGLES ST.

SCALE 40 FEET PER INCH

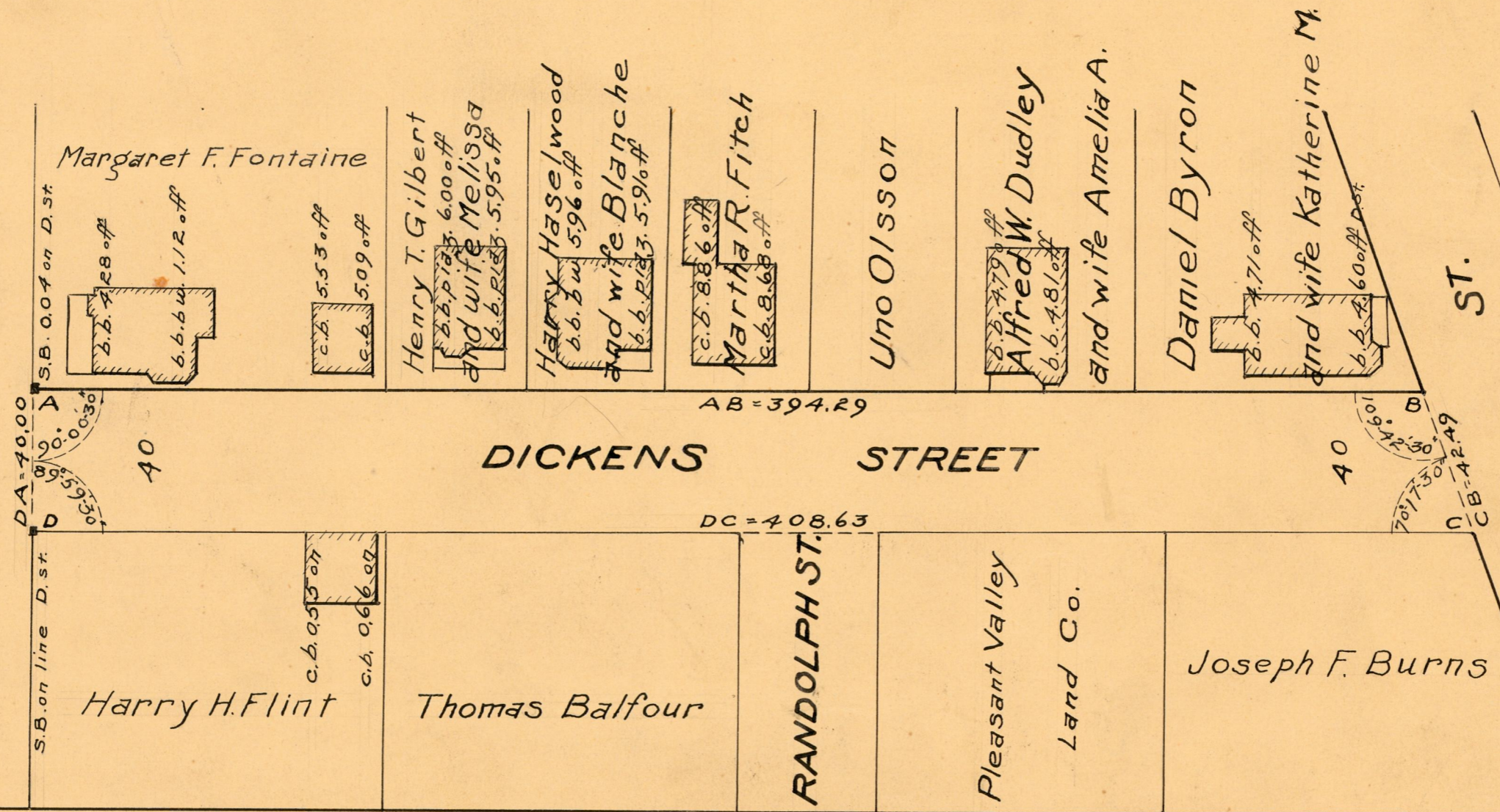
DECLARED AND ESTABLISHED A PUBLIC HIGHWAY BY RESOLUTION
OF THE BOARD OF ALDERMEN

MARCH 19, 1925



OAKLAND AVE.

OAKLAND AVE.



RUGGLES ST.

RUGGLES ST.

OFFICE No.	22998
DRAWER	81
SHEET	J-95