

PROVIDENCE, R.I.
CITY ENGINEER'S OFFICE
STREET LINE DEPT.
December 14, 1932
054767

NOTE

The area declared a public highway is denoted by the letters A, B, C, D, and conforms with the plat recorded in Plat Book 35 on page 80 in the office of the Recorder of Deeds

PLAT OF

INTERVALE ROAD

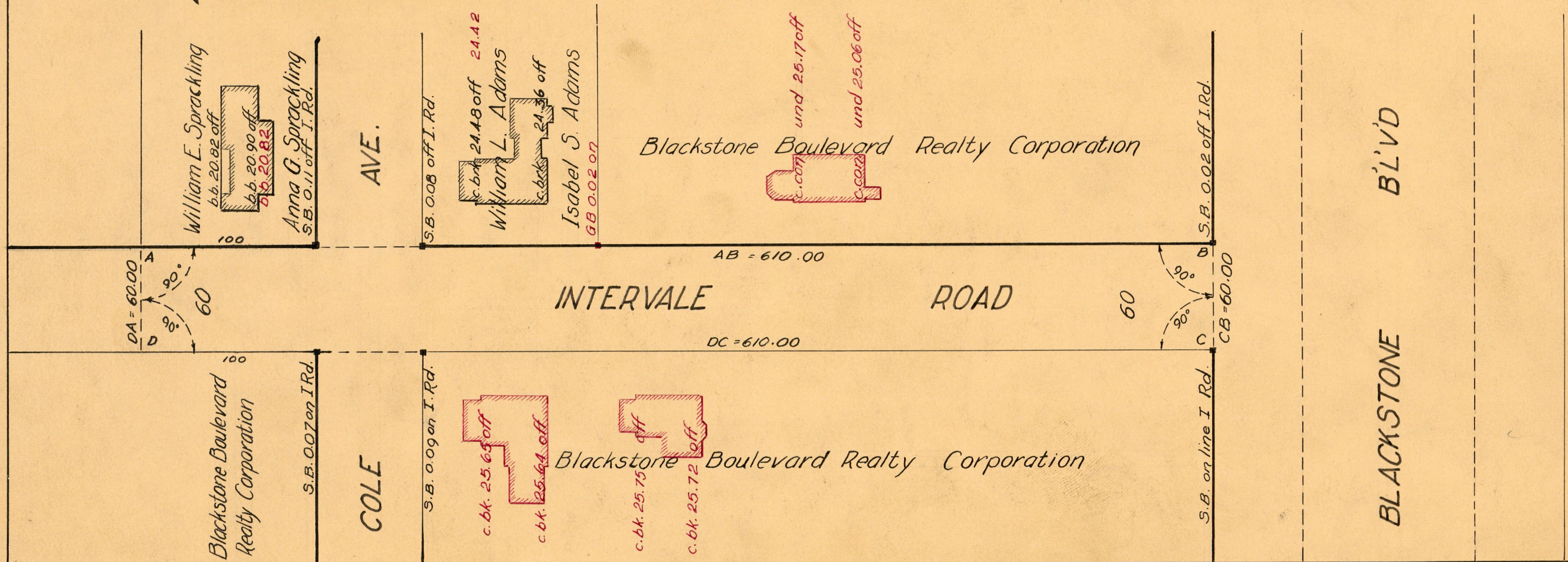
FROM A POINT 100 FEET WEST OF COLE AVE. TO BLACKSTONE BOULEVARD

SCALE 60 FEET PER INCH

DECLARED A PUBLIC HIGHWAY BY RESOLUTION OF THE
BOARD OF ALDERMEN
JUNE 19, 1924



Notes in Red added July 16, 1926



OFFICE No.	22987
DRAWER	81
SHEET	J-92