

PROVIDENCE, R.I.
CITY ENGINEER'S OFFICE
STREET LINE DEPT.
May 25, 1934
055881

NOTE
The area declared a public highway is denoted by the letters ABCD, and conforms with the plat recorded in plat book 35 on page 80 in the office of the Recorder of Deeds.

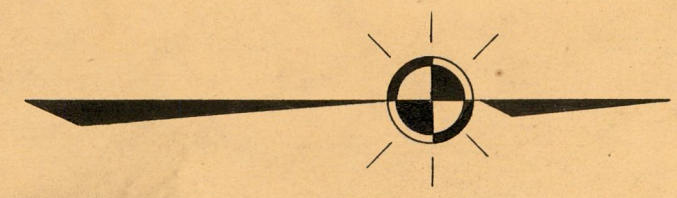
PLAT OF
COLE AVENUE

FROM ROCHAMBEAU AVE. TO INTERVALE ROAD

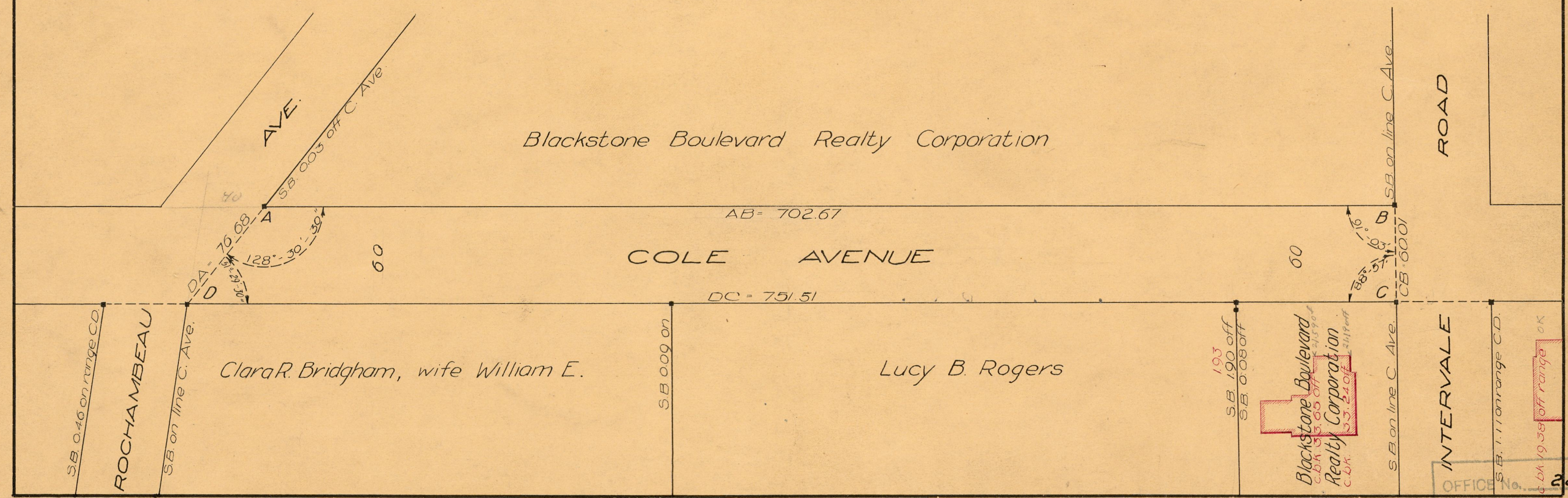
SCALE 60 FT. PER INCH

DECLARED A PUBLIC HIGHWAY BY RESOLUTION
OF THE BOARD OF ALDERMEN

JUNE 19, 1924



Notes in Red added July 16, 1926



OFFICE No.	22986
DRAWER	81
SHEET	J-91