

NOTE :-

The area declared a public highway is denoted by the letters ABCD, and conforms with the plat recorded in plat book 35 on page 80 in the office of the Recorder of Deeds.

PLAT OF

COLE AVENUE

FROM NORTH LINE OF WESTFORD ROAD TO INTERVALE ROAD

SCALE 60 FEET PER INCH

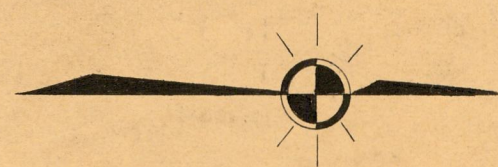
DECLARED A PUBLIC HIGHWAY BY RESOLUTION OF THE BOARD OF ALDERMEN

SEPTEMBER 18, 1924

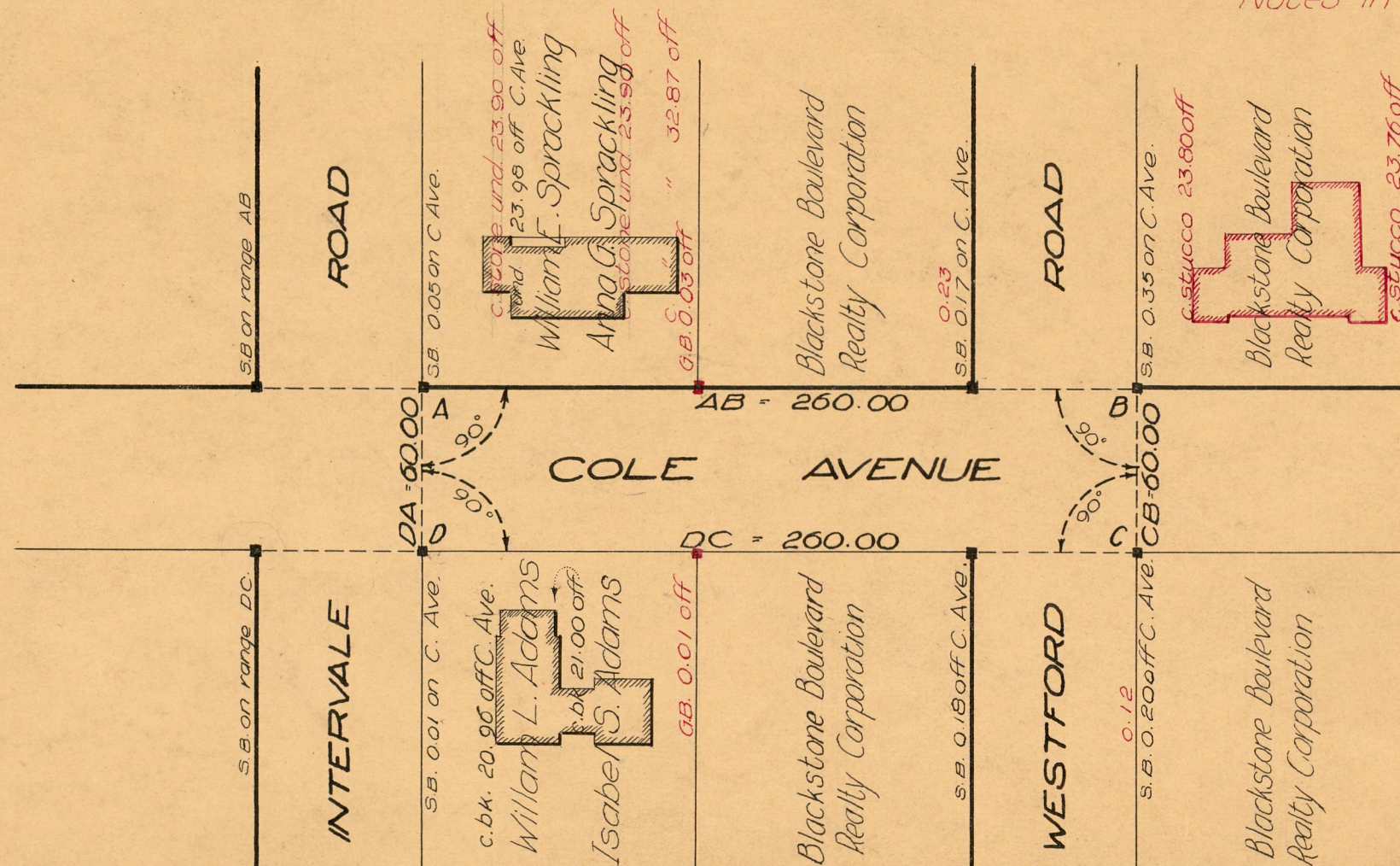
PROVIDENCE, R.I.
CITY ENGINEER'S OFFICE
STREET LINE DEPT.

May 25, 1934

055880



Notes in Red added July 16, 1926.



OFFICE No.	22 985
DRAWER	81
SHEET	✓ - 90