

PROVIDENCE, R.I.
CITY ENGINEER'S OFFICE

STREET LINE DEPT.
MAY 18, 1922

045735

PLAT OF FAIRVIEW STREET

AS PLATTED

FROM

MT. PLEASANT AVE. TO VILLANOVA PLAT,

THENCE TO WEST LINE OF LEAH ST.

SCALE 50 FEET PER INCH

Opened and Established a Public Highway

by Resolution of the
Board of Aldermen

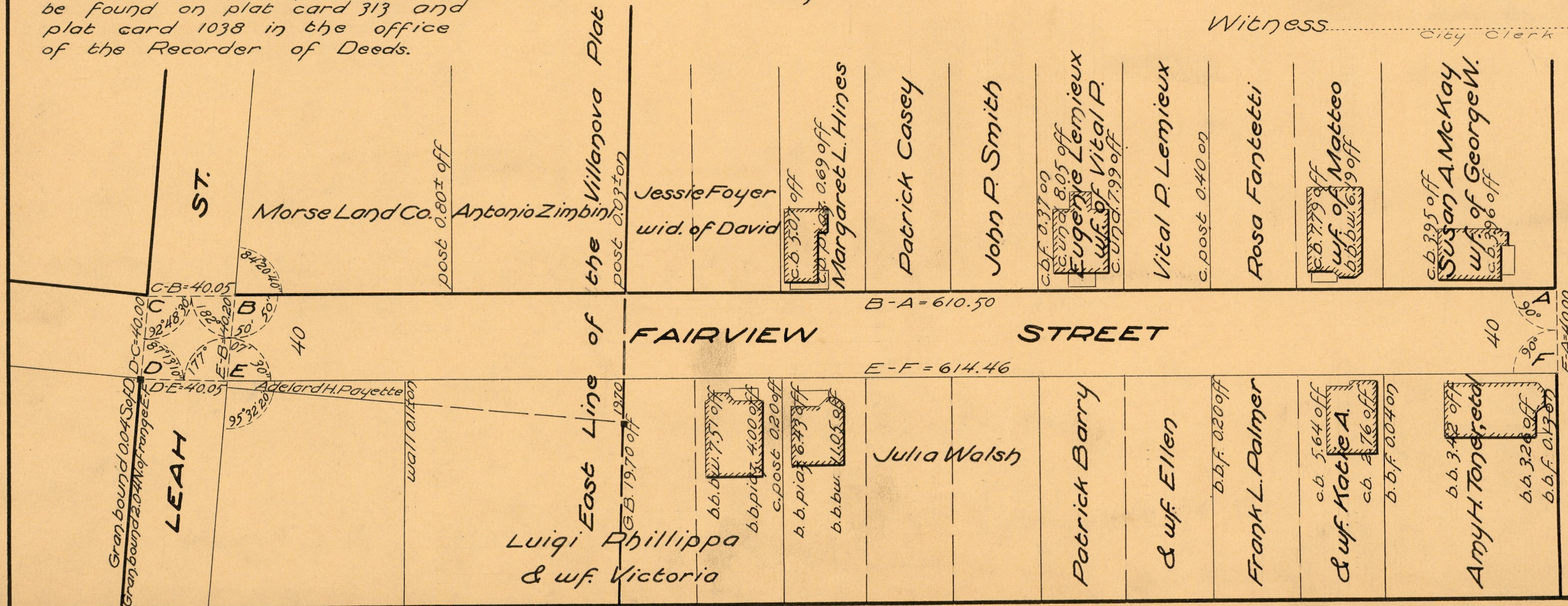
May 18, 1922

NOTE:

The area opened and established as a public highway is indicated by the letters A-B-C-D-E-F.

The lines thus defined agree with the plat entitled "Plat of the Southerly portion of Mt. Pleasant" and that entitled "The Villanova Plat," copies of which may respectively be found on plat card 313 and plat card 1038 in the office of the Recorder of Deeds.

Witness..... City Clerk



OFFICE No.	2120
DRAWER	81
SHEET	1-9