

PROVIDENCE, R.I.
 CITY ENGINEER'S OFFICE
 STREET LINE DEPT.
 May 25, 1934
 055882

PLAT OF

ARDOENE STREET

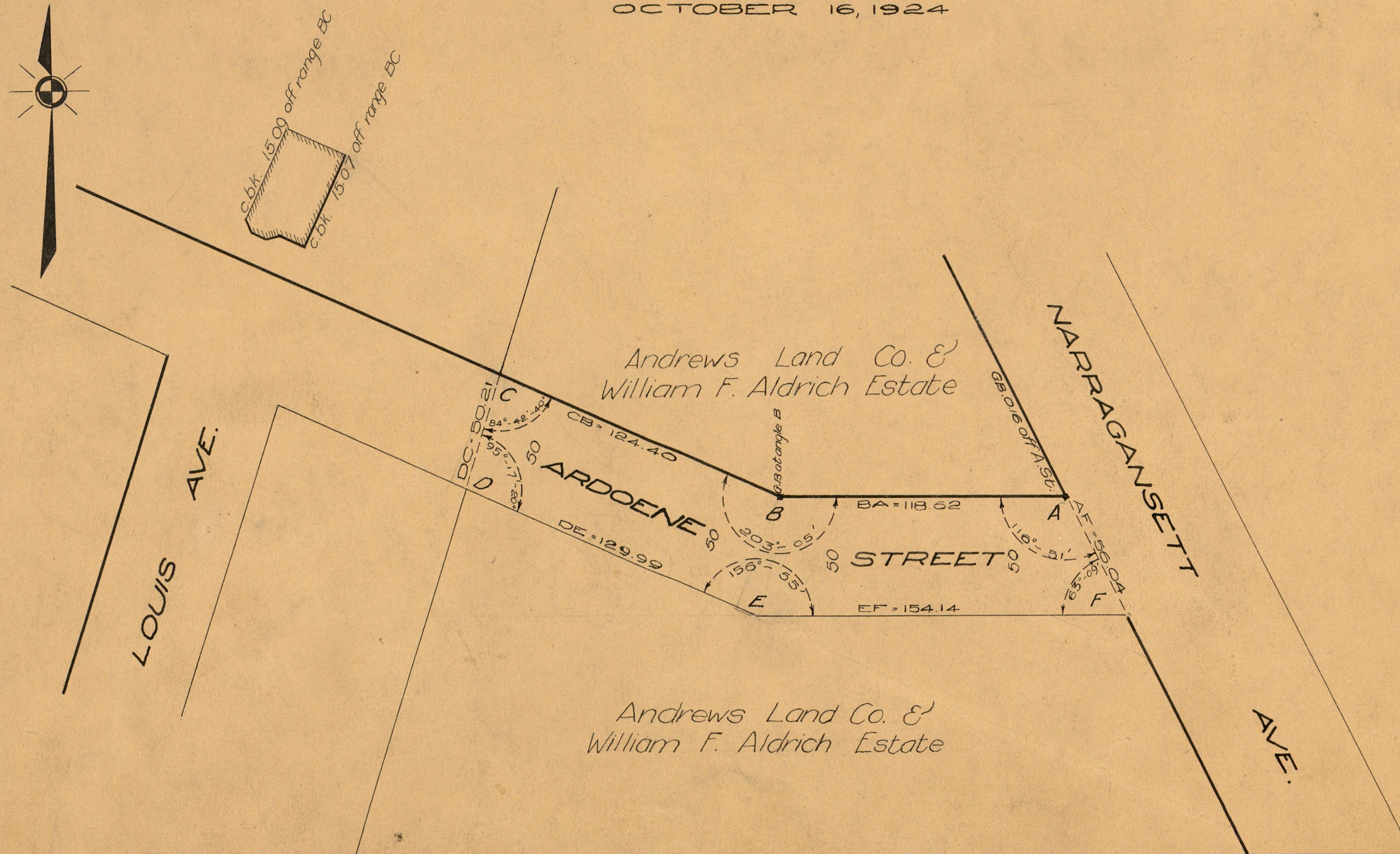
FROM NARRAGANSETT AVE. TO PART ALREADY RECEIVED

SCALE 50 FEET PER INCH

DECLARED A PUBLIC HIGHWAY BY RESOLUTION
 OF THE BOARD OF ALDERMEN

OCTOBER 16, 1924

The area declared a public highway is indicated by the letters ABCDEF, and conforms with the deed recorded in Deed Book 552 on page 272 in the office of the Recorder of Deeds.



OFFICE No. 22983
 DRAWER 81
 SHEET J-89