

STATEMENT
PLAT OF LAND CONDEMNED

pursuant to the provisions of Chapter 2118 of the Public Laws entitled "An Act Relating to the taking of Land in the Cities of Providence and Pawtucket for Highway Purposes" passed by the General Assembly at its January Session A.D. 1921 and by and in accordance with the Joint Resolution of the City Council of the City of Providence numbered 406 Approved August 26, 1924 condemning certain land for Highway Purposes

JOSEPH H. GAINER

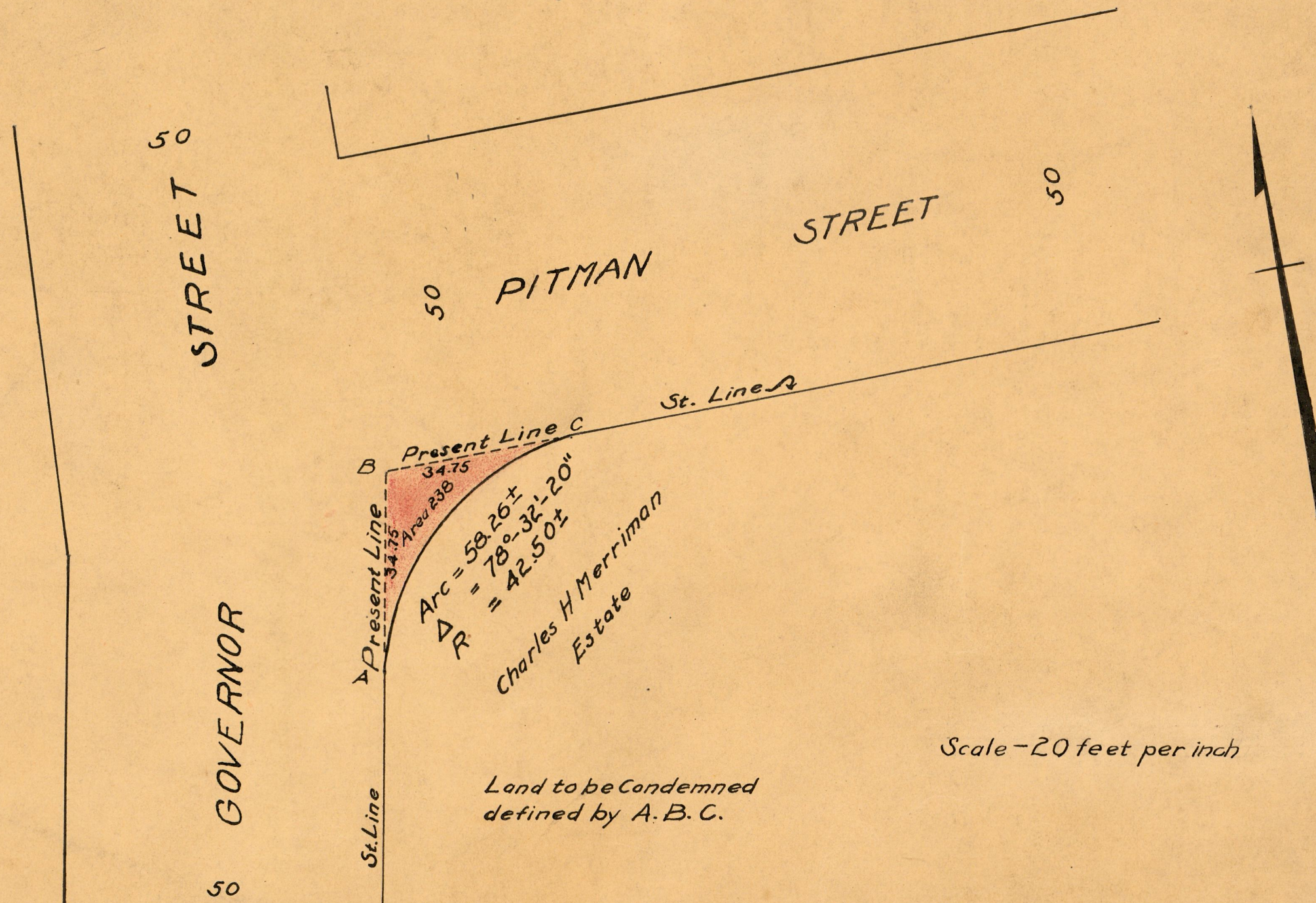
Mayor of the City of Providence

PROVIDENCE, R.I.
CITY ENGINEER'S OFFICE
CITY PROPERTY DEPT.
JUNE 19, 1924
047030

PROVIDENCE, R.I.
CITY ENGINEER'S OFFICE
STREET LINE DEPT.

Feb. 2, 1925

047594



OFFICE No. 22980
DRAWER " 81
SHEET " J-86