

PROVIDENCE, R.I.
CITY ENGINEER'S OFFICE
STREET LINE DEPT.

Jan. 26, 1925.

047587

NOTE:- The area declared a Public Highway is denoted by the letters ABCD, and conforms with Joint Resolution of City Council No 384 approved November 7, 1917.

PLAT OF SMITHFIELD AVENUE

FROM MOSHASSUCK RIVER TO CEMETERY ST.

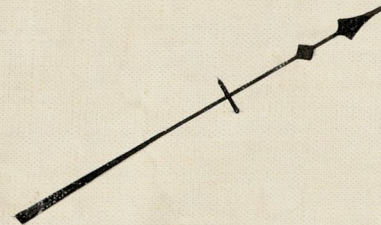
IN TWO SHEETS.

SCALE 80 FEET PER INCH

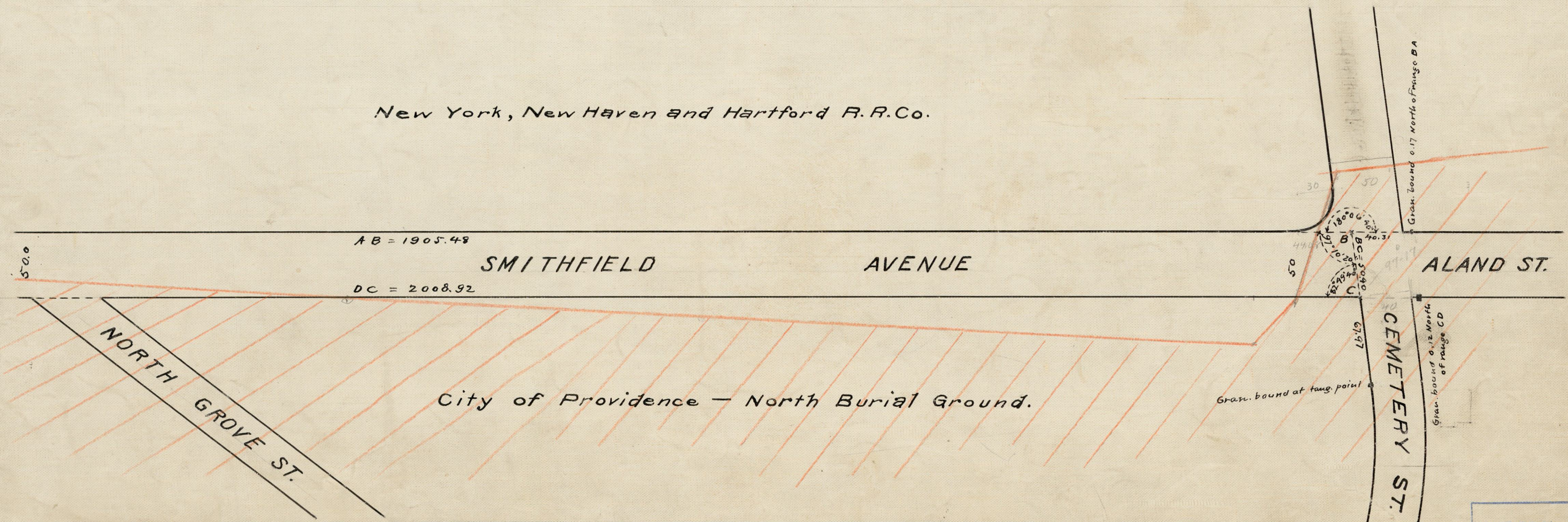
DECLARED A PUBLIC HIGHWAY BY RESOLUTION

OF THE BOARD OF ALDERMEN

DECEMBER 4, 1924.



New York, New Haven and Hartford R.R.Co.



OFFICE No. 22977
DRAWER " 81
SHEET " 4-83