

See note on sheet one.

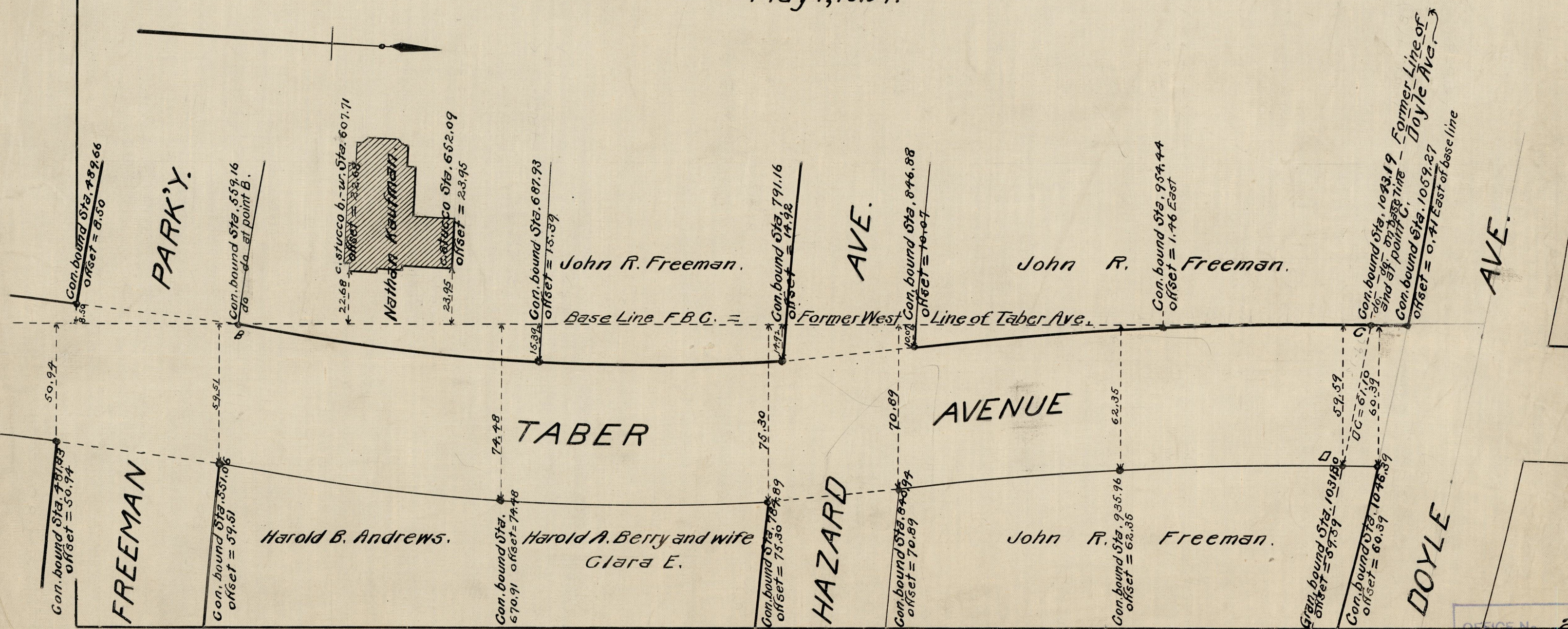
PROVIDENCE, R.I.  
CITY ENGINEER'S OFFICE  
STREET LINE DEPT.  
Jan. 26, 1925  
047532

# PLAT OF TABER AVENUE

FROM LAUREL AVE. TO DOYLE AVE.  
IN TWO SHEETS

SCALE 40 FEET PER INCH

Opened and Repaired by order of the  
Board of Aldermen  
May 1, 1924.



OFFICE No.	22945
DRAWER	81
SHEET	J-77