

PROVIDENCE, R.I.
CITY ENGINEER'S OFFICE
STREET LINE DEPT.
Jan. 26, 1925.
047531

Note: Taber Avenue as shown hereon was dedicated for highway purposes by the "John R. Freeman Plat No. 1." recorded on plat card 1036 in the office of the Recorder of Deeds. The lines of Taber Avenue are marked by concrete bounds shown on said "Freeman Plat" and located by stations on, and offsets at right angles to, the base line F.B.C. The portion of Taber Avenue ordered to be opened and repaired is indicated by the letters A B C D E.

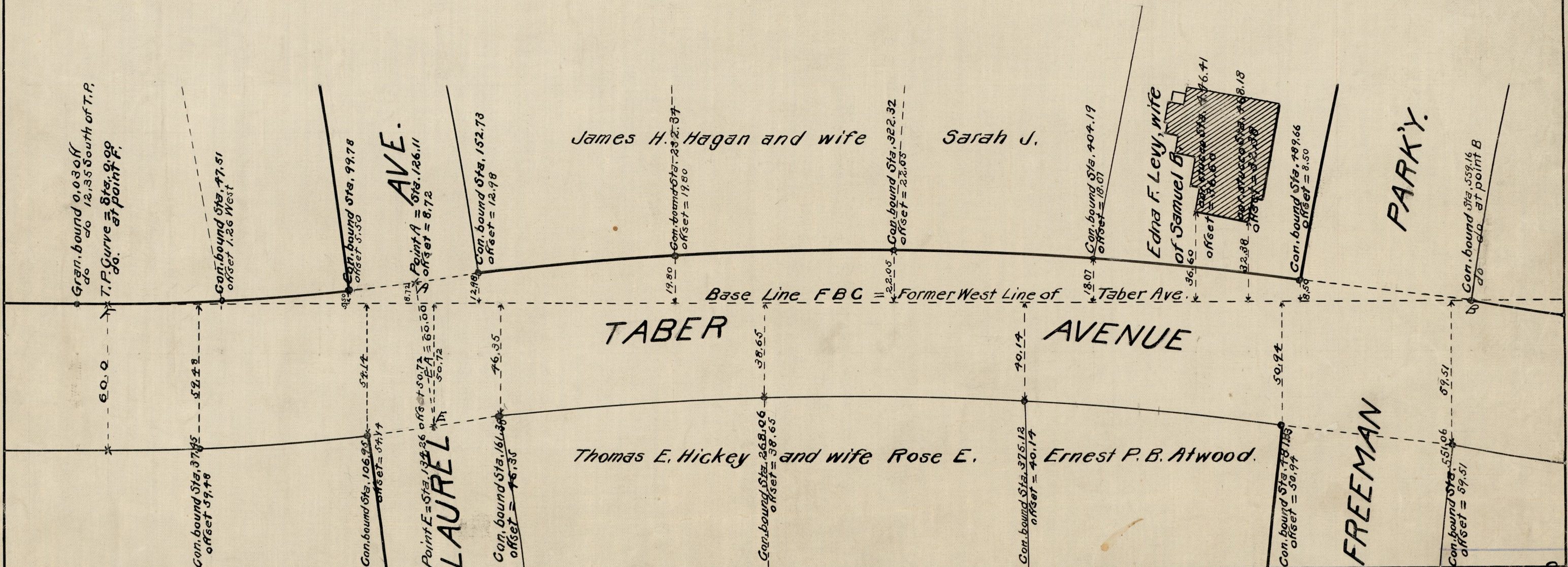
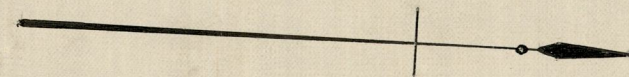
PLAT OF TABER AVENUE

FROM LAUREL AVE. TO DOYLE AVE.

IN TWO SHEETS

SCALE 40 FEET PER INCH

Opened and Repaired by order of the
Board of Aldermen
May 1, 1924.



OFFICE No. 22944
DRAWER 81
SHEET J-76