

Note. The portion established and declared a public highway is denoted by the letters ABCDEFGH, and conforms to "The Highlands" plat recorded on plat card 899 in the office of the Recorder of Deeds.

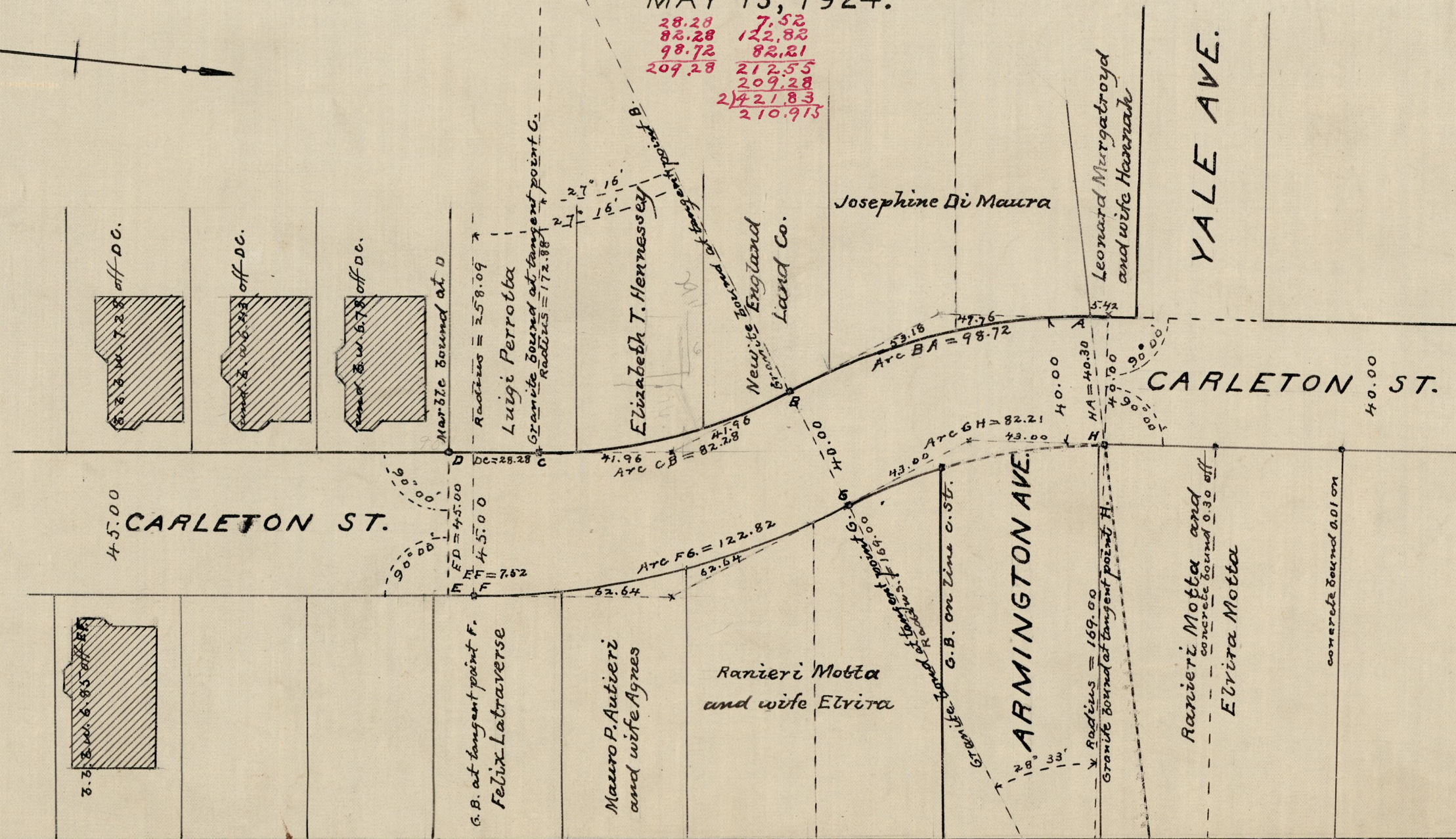
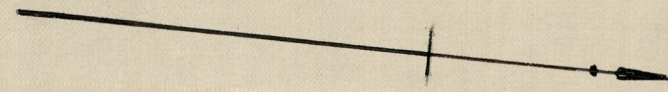
PLAT OF

CARLETON STREET

FROM THE PORTION RECEIVED NEAR YALE AVE.
SOUTHERLY TO OTHER PORTION ALREADY RECEIVED
SCALE 40 FEET PER INCH

ESTABLISHED AND DECLARED A PUBLIC HIGHWAY
BY RESOLUTION OF THE BOARD OF ALDERMEN
MAY 15, 1924.

28.28	7.52
82.28	122.82
98.72	82.21
209.28	212.55
	209.28
	2421.83
	210.915



OFFICE No.	22942
DRAWER	81
SHEET	J-75