

2001.002

PROVIDENCE, R.I.  
CITY ENGINEER'S OFFICE  
STREET LINE DEPT.  
JAN. 23, 1925.  
047525

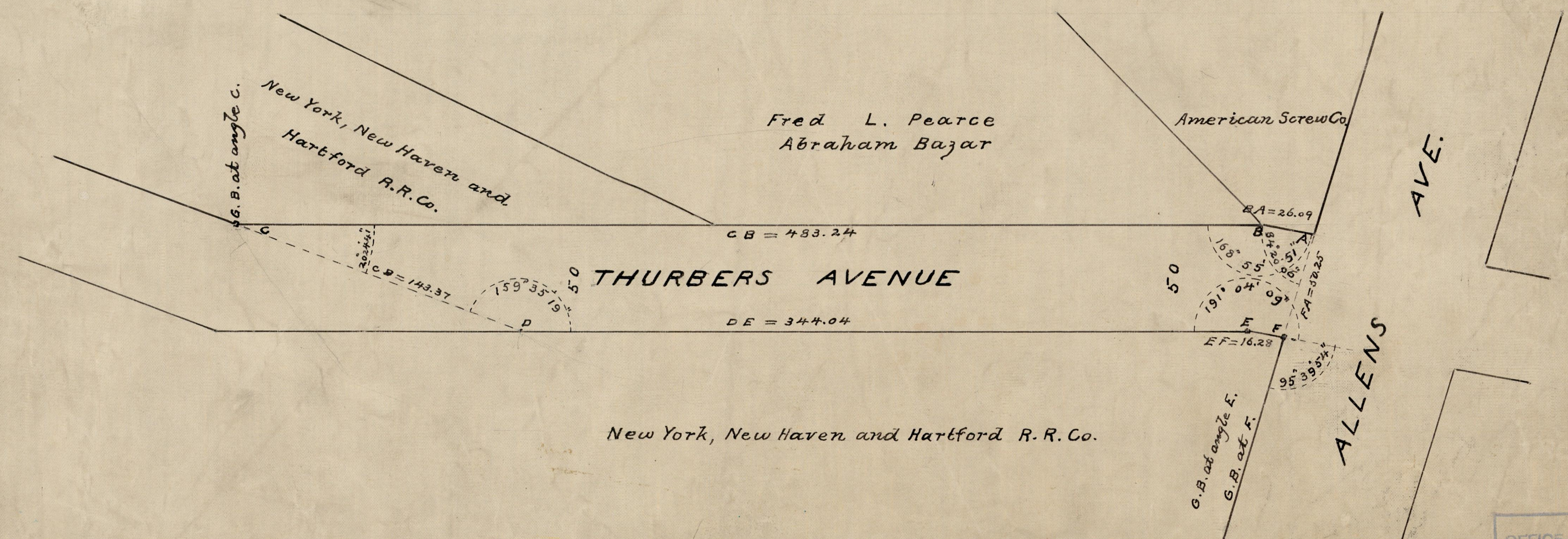
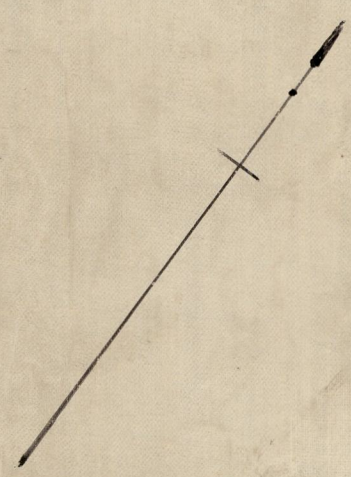
Note. The area declared a public highway is denoted by the letters ABCDEF, and conforms with the deed recorded in Deed Book 521 page 285 in the office of the Recorder of Deeds.

PLAT OF  
**THURBERS AVENUE**

FROM ALLENS AVE TO THE PORTION ALREADY RECEIVED NEAR KAY ST.

SCALE 50 FEET PER INCH

DECLARED A PUBLIC HIGHWAY BY RESOLUTION OF THE BOARD OF ALDERMEN  
June 19, 1924.



OFFICE No.	22941
DRAWER	81
SHEET	U-74