

PROVIDENCE, R.I.
CITY ENGINEER'S OFFICE
STREET LINE DEPT.
Dec. 31, 1924

047480

PLAT OF SLATER AVENUE

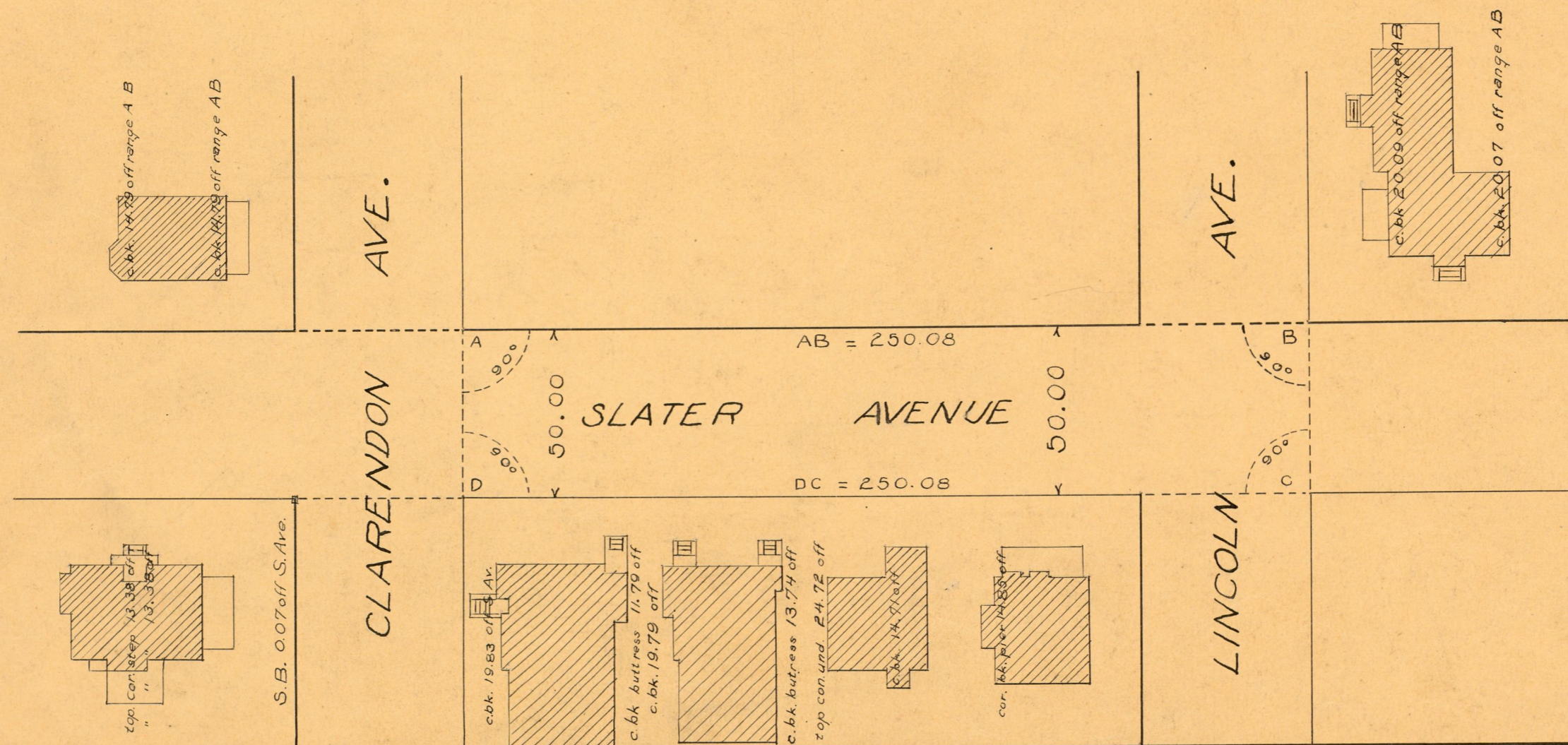
FROM CLARENDON AVE TO
SOUTH LINE OF LINCOLN AVE.

SCALE 40 FEET PER INCH

DECLARED A PUBLIC HIGHWAY BY RESOLUTION
OF THE BOARD OF ALDERMEN

JUNE, 19, 1924.

250.08



OFFICE No.	22887
DRAWN	81
SHEET	J-73