

PROVIDENCE, R.I.
CITY ENGINEER'S OFFICE

STREET LINE DEPT.
Dec. 31, 1924

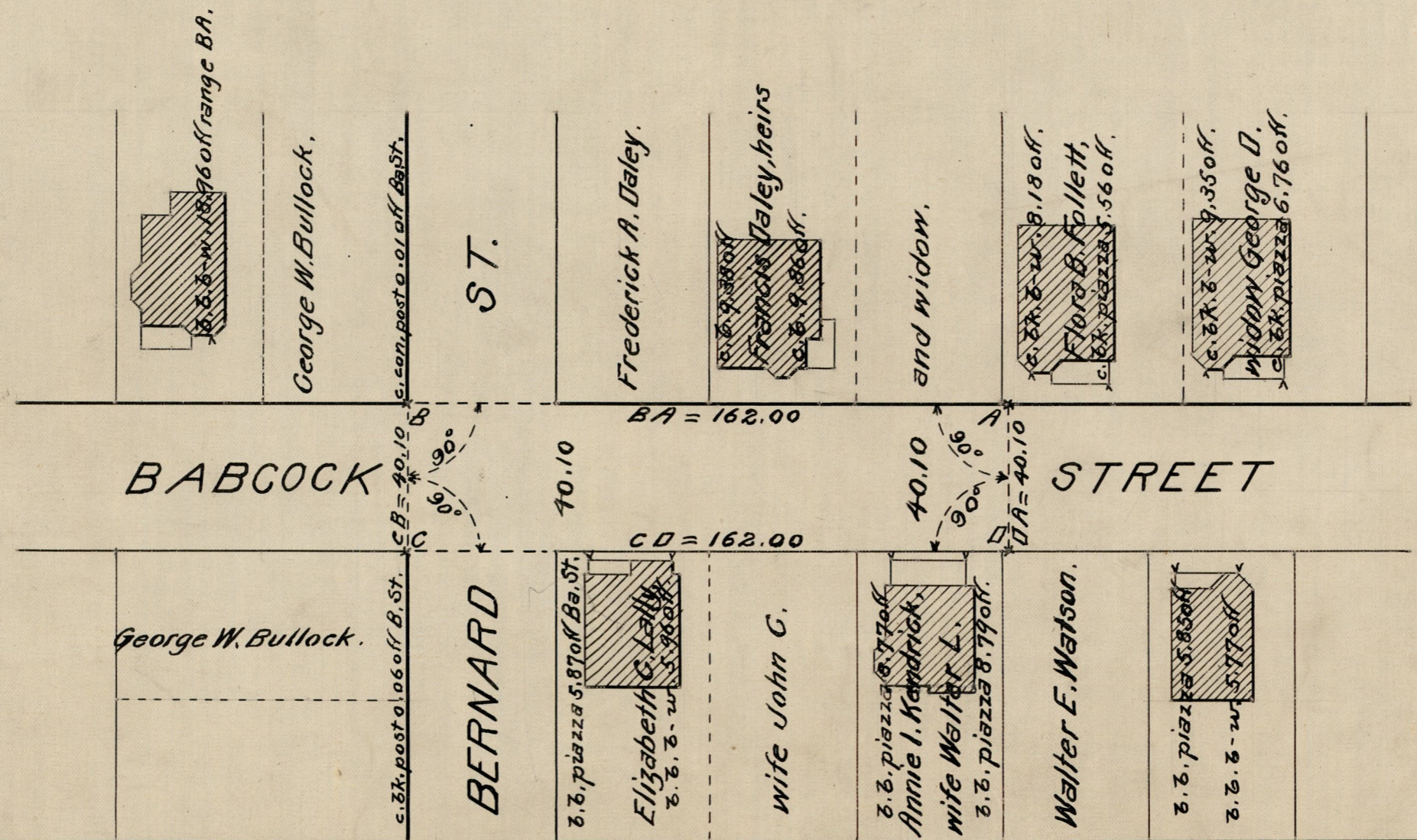
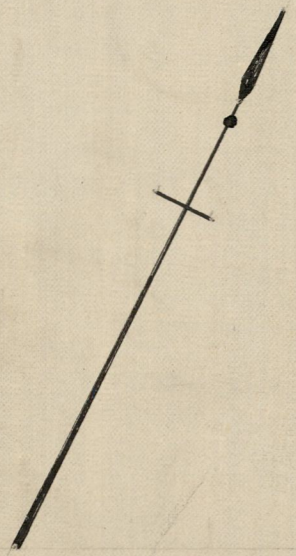
047479

PLAT OF BABCOCK STREET

FROM A POINT 122 FEET EAST OF BERNARD ST.
TO THE WESTERLY SIDE OF BERNARD ST.

SCALE 40 FEET PER INCH

ESTABLISHED AND DECLARED A PUBLIC HIGHWAY
BY RESOLUTION OF THE BOARD OF ALDERMEN
DEC. 18, 1924



OFFICE No. 22886
DRAWER 81
SHEET J-72