

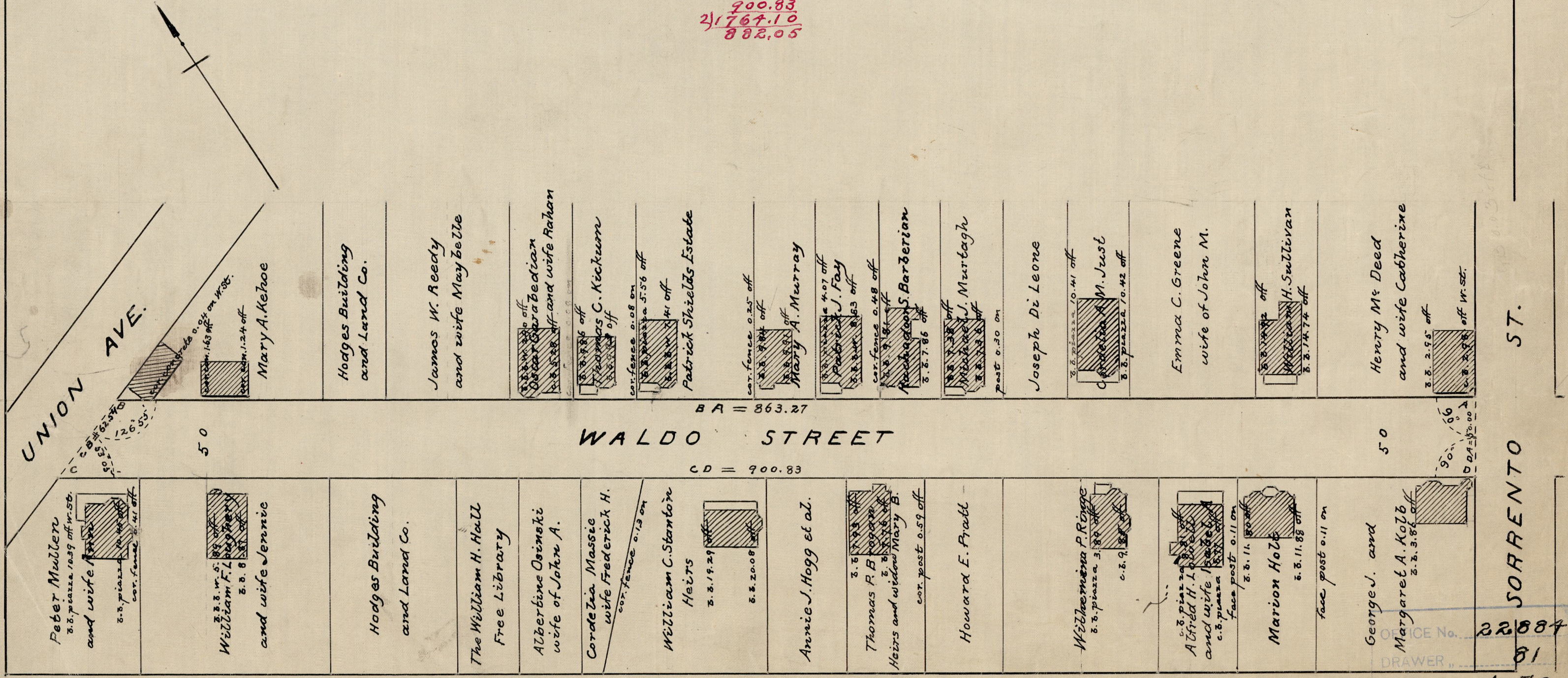
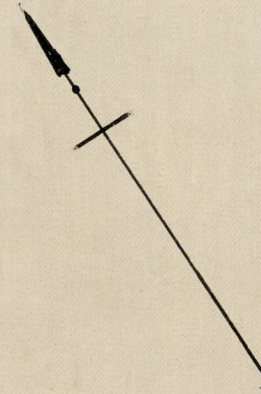
PROVIDENCE, R.I.
CITY ENGINEER'S OFFICE
STREET LINE DEPT.
Dec. 31, 1924.

047475

PLAT OF
WALDO STREET
FROM UNION AVE. TO SORRENTO ST.
SCALE 60 FEET PER INCH

ESTABLISHED AND DECLARED A PUBLIC HIGHWAY
BY RESOLUTION OF THE BOARD OF ALDERMEN
DEC. 18, 1924

863.27
900.83
2) 1764.10
882.05



UNION AVE.

WALDO STREET

SORRENTO ST.

OFFICE No. 22884
DRAWER 81
SHEET 5-70