

F.B.B.

PROVIDENCE, R.I.
CITY ENGINEER'S OFFICE

STREET LINE DEPT.
FEB. 14, 1924

045510

PLAT OF NAHANT STREET

FROM

HASSAN ST. TO CHARLES ST.

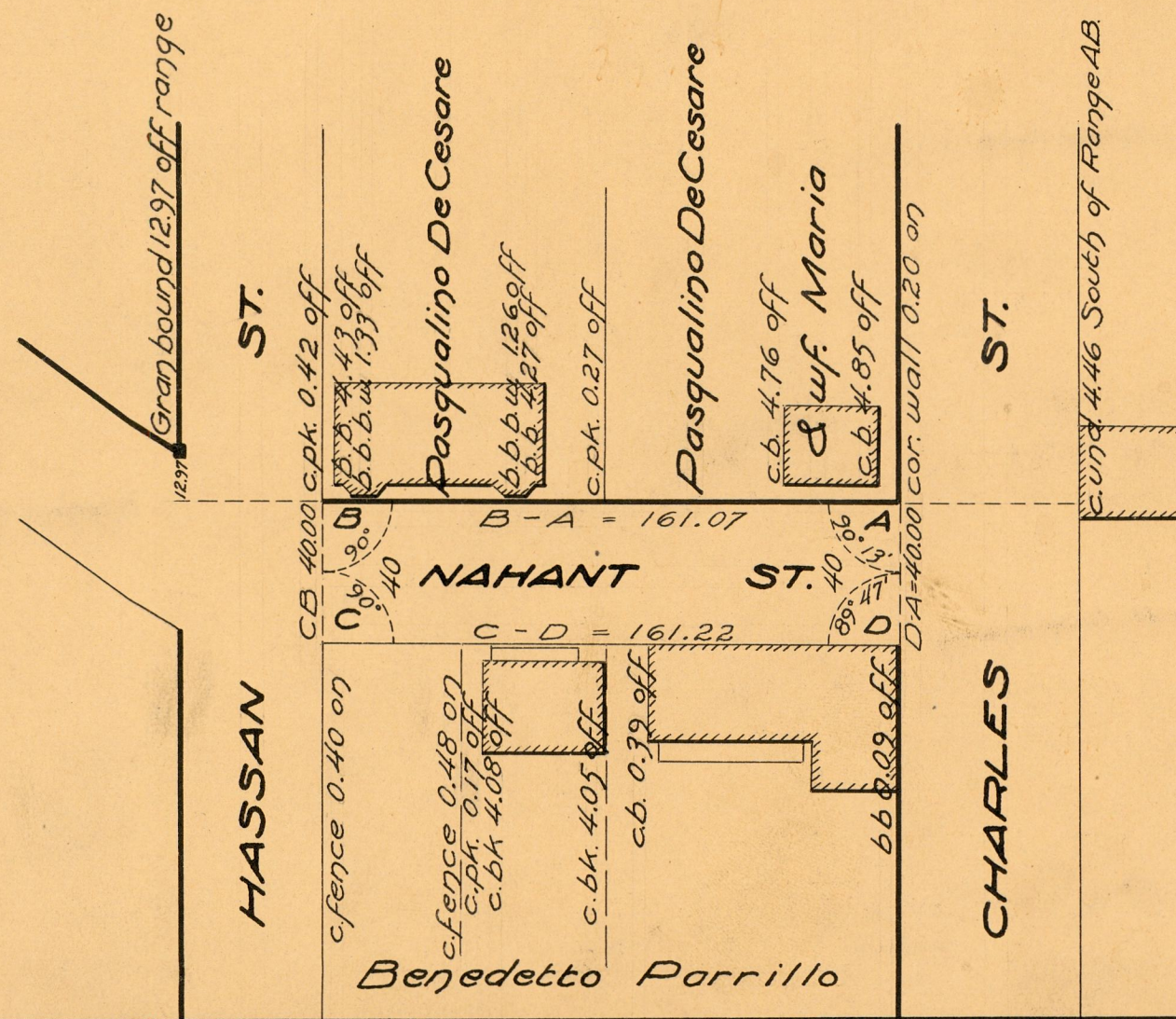
SCALE 50 FEET PER INCH

Declared a Public Highway by the
Board of Alderman

By Reason of Twenty Years Use
October 2, 1924

Witness.....city clerk.....

NOTE, The limits of the area declared a public highway are indicated by the letters A.B.C.D.
The lines thus fixed agree with the "Plat of the Heaton Estate in North Providence" etc.; a copy of which can be found on plat card 373, in the office of the Recorder of Deeds.



OFFICE No.	22283
DRAWER	81
SHEET	J-7