

PROVIDENCE, R.I.
CITY ENGINEER'S OFFICE

STREET LINE DEPT.

Dec. 31, 1924.

047473

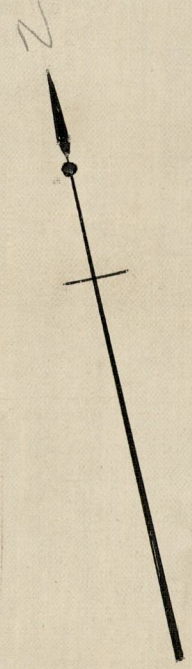
PLAT OF FOSDYKE STREET

FROM MORRIS AVE. TO ELMGROVE AVE.

SCALE 60 FEET PER INCH.

*Established and Declared a public highway by Resolution
of the Board of Aldermen
December 18, 1924.*

873.70
868.84
2)1742.54
871.27



AVE.

John J. Morris and
wife Rose A.
c. bk. 16.65 off F. St.
c. bk. 16.73 off.

James V. Day

Ernest Clayton and

wife Maude H.

Fannie F. Clarke,
c. bk. 16.10 off.
c. bk. 16.12 off.

Georgella E. Chatterton,
c. bk. 16.23 off.
c. bk. 16.27 off.

Annie D. Pepler, et al.

Frank W. Goodman and
wife Allen M.
c. bk. 19.13 off.
c. bk. 20.10 off.

Annie D. Pepler, et al.

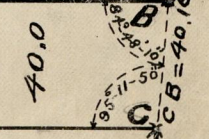
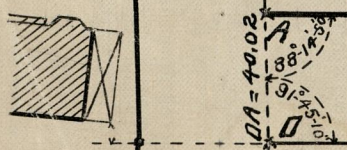
Granite bound on line F. St.

AVE.

FOSDYKE STREET

AB = 873.70

CD = 868.84



c. bk. piazza 6.43 on range D.C.
Granite bound 0.30 on do.

MORRIS

Alma L. Heltzan.

end rail 0.30 off.

H. Raymond Allan
and wife Lena,
c. bk. 15.28 off.
c. bk. 15.43 off.

William H. Goodman

and wife Violet O.

George McPherson,
c. bk. 15.92 off.
c. bk. 16.14 off.

Horace I. and
Alice C. Briggs,
c. bk. 9.98 off.

Ella S. Hooper.

Annie D. Pepler, et al.

Herbert A. McLeod,
c. bk. 19.78 off.
c. bk. 19.80 off.

Ralph R. Mellor,
and wife Ethel S.,
c. bk. 18.74 off.
c. concrete step 0.13 on.

Benjamin H. Stude
and wife Bessie A.,
c. bk. 23.92 off.
c. shingles 23.96 off.

Alva M. Benson,
c. shingles 23.92 off.

Annie D. Pepler, et al.

OFFICE NO. 22883
DRAWER 81
SHEET J-69

ELMGROVE