

T.F.C. 1853-45

PROVIDENCE, R.I.
CITY ENGINEER'S OFFICE

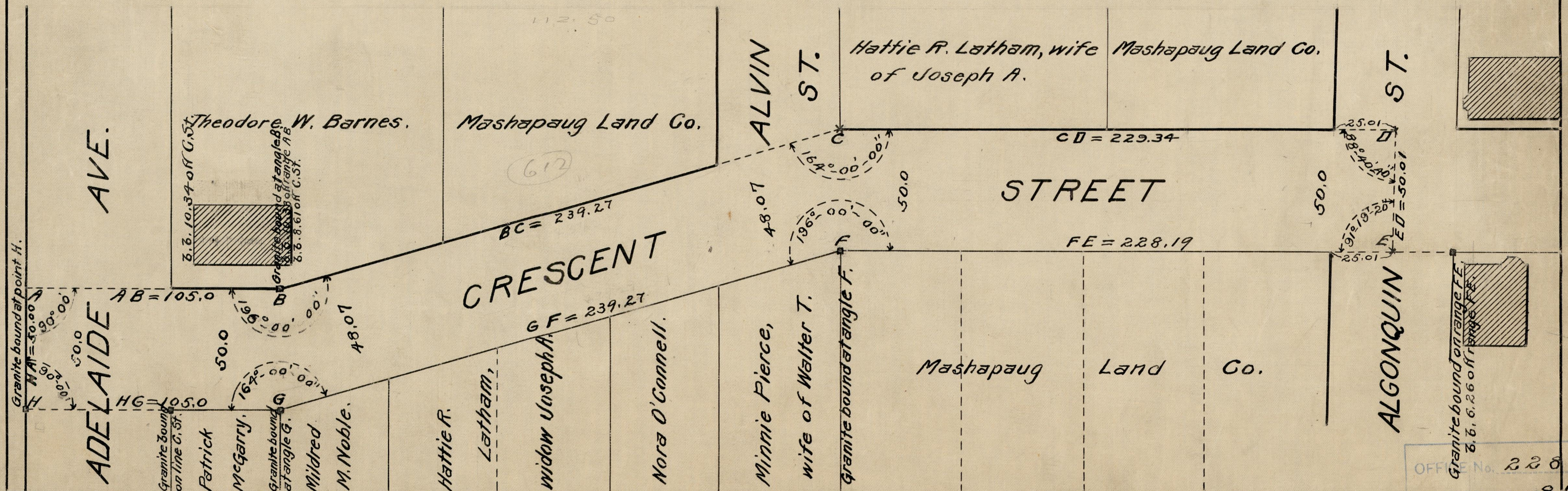
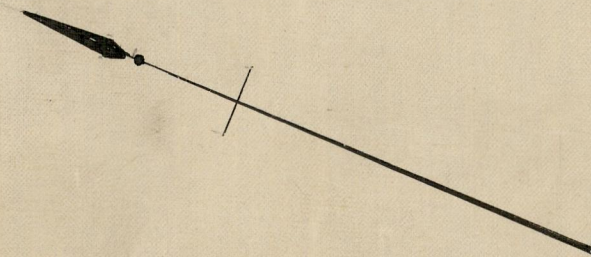
STREET LINE DEPT.

Dec. 31, 1924.

047471

PLAT OF
CRESCENT STREET
 FROM NORTH LINE OF ADELAIDE AVE.
 TO PART ALREADY RECEIVED
 SCALE 40 FEET PER INCH
 ESTABLISHED A PUBLIC HIGHWAY BY RESOLUTION
 OF THE BOARD OF ALDERMEN

105.00	105.00
239.27	239.27
229.34	228.19
573.61	572.76
	573.61
21176.07	
573.035	



OFFICE No. 22882
 DRAWER " 81
 SHEET " J-68