

Dec. 23, 1924.

047438

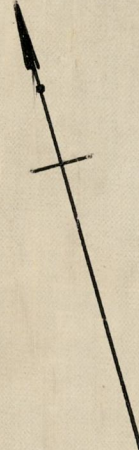
PLAT OF ALMIRA AVENUE

FROM UNIT ST. TO ALDINE ST.
SCALE 40 FEET PER INCH.

ESTABLISHED AND DECLARED A PUBLIC HIGHWAY
BY RESOLUTION OF THE BOARD OF ALDERMEN

NOV. 20, 1924.

266.11
273.21
2639.32
269.66



S.B. 0.07 N. of range AB.

ST.

S.B. 0.15 N. of range AB.

S.B. 0.15 N. of range AB.

S.B. 0.15 N. of range AB.

S.B. 0.15 N. of range AB.

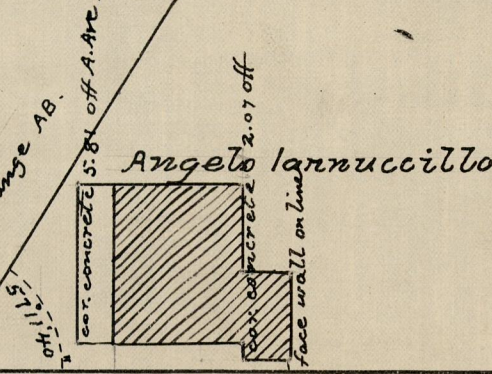
S.B. 0.15 N. of range AB.

S.B. 0.15 N. of range AB.

S.B. 0.15 N. of range AB.

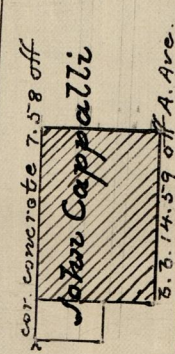
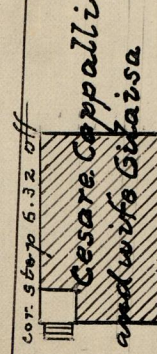
S.B. 0.15 N. of range AB.

S.B. 0.15 N. of range AB.



face wall 0.10 off

Achille Di Clemente
and wife Francesca L.



ALDINE ST.

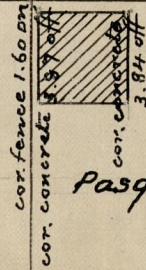
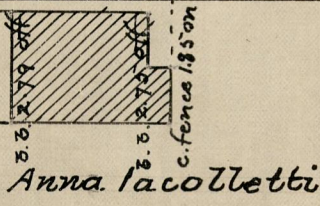
S.B. 4.795. of range AB.

AB = 267.11

ALMIRA AVENUE

DC = 273.21

UNIT



S.B. 0.08 Dn A.A.V.

LUCY ST.

S.B. on line A. Ave.

Giovanni Izzo
Domenico Izzo

c.B. (4' up) 0.06 S. of range

OFFICE No. 22879
DRAWER 81
SHEET J-66