

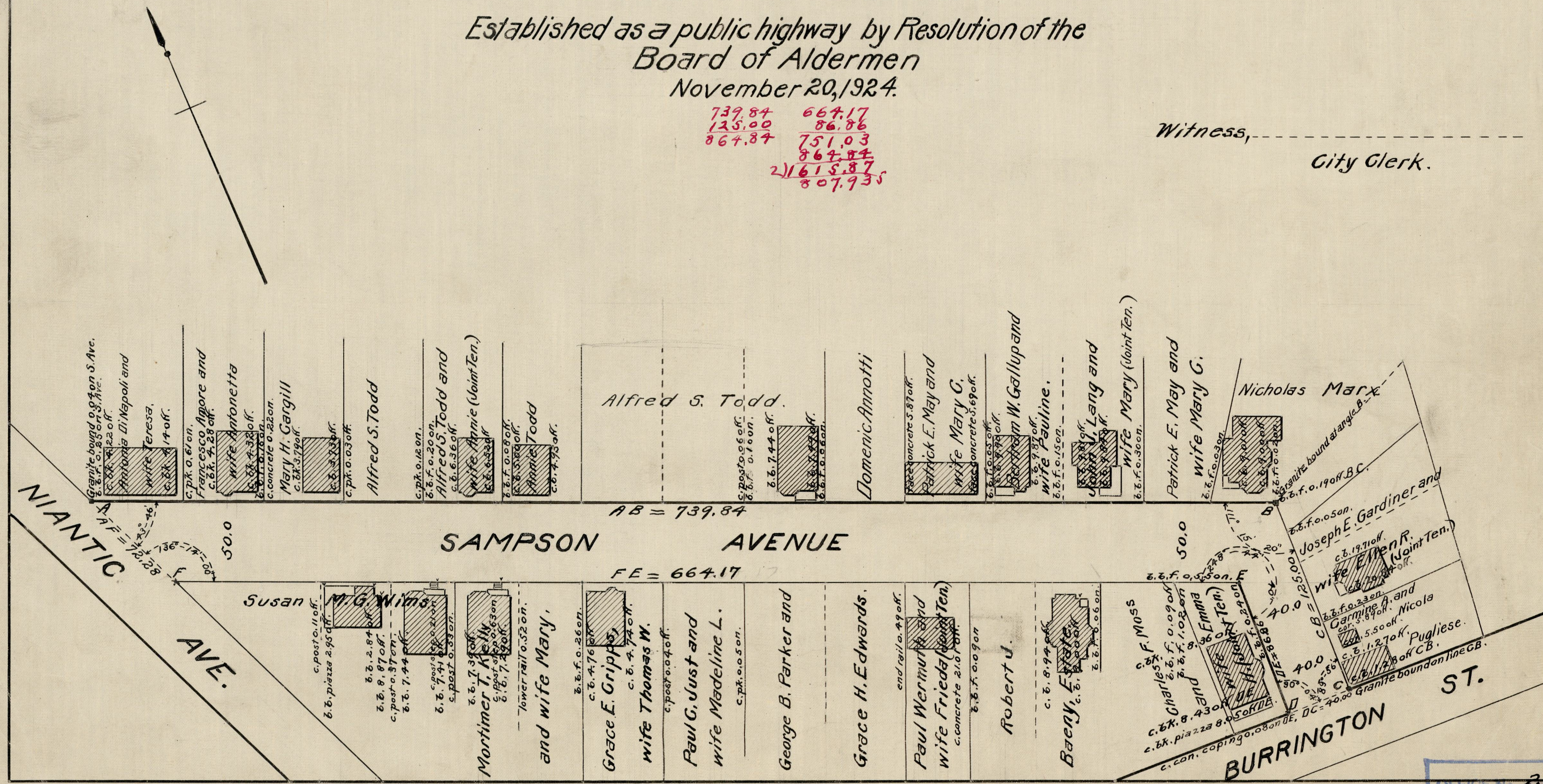
# PLAT OF SAMPSON AVENUE

FROM NIANTIC AVE. TO BURRINGTON ST.  
SCALE 60 FEET PER INCH.

Established as a public highway by Resolution of the  
Board of Aldermen  
November 20, 1924.

739.84    664.17  
125.00    86.86  
864.84    751.03  
          864.84  
2) 1615.87  
     807.935

Witness, \_\_\_\_\_  
City Clerk.



OFFICE No. 22832  
DRAWER, 81  
SHEET J-64