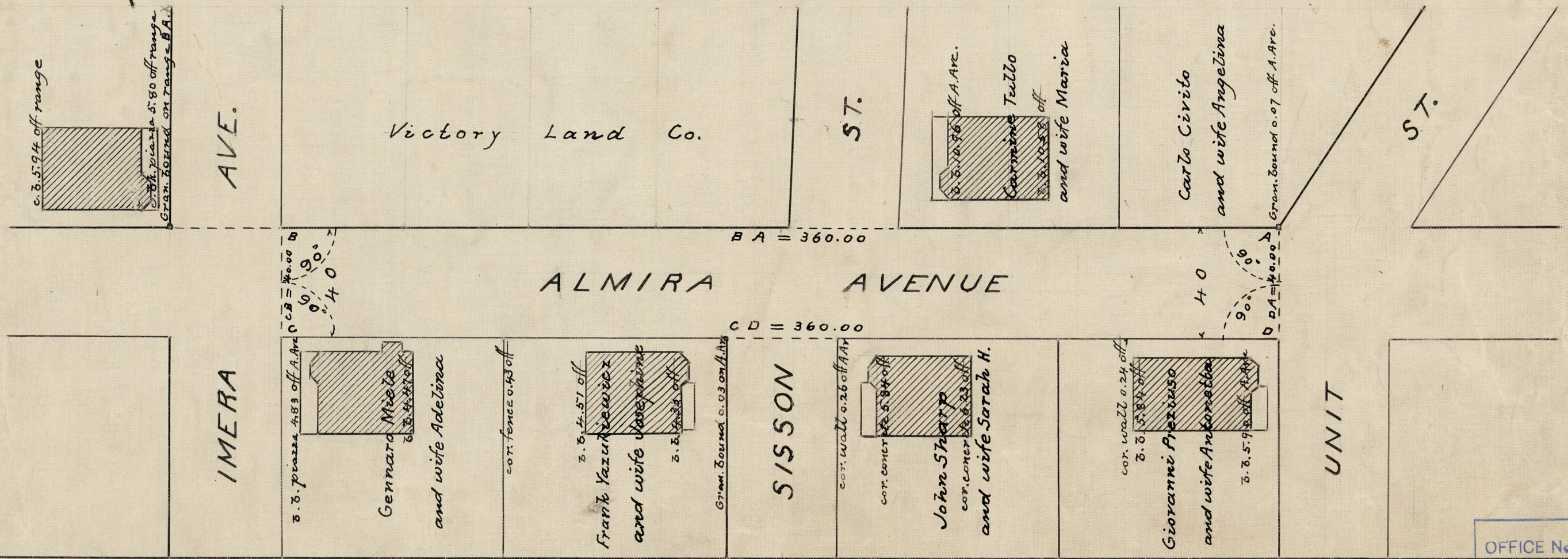
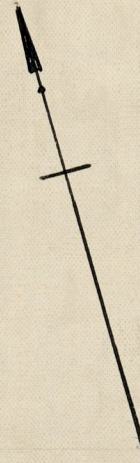


Nov. 22. 1924

047386

PLAT OF
ALMIRA AVENUE
FROM UNIT ST. TO IMERA AVE.
SCALE 40 FEET PER INCH.
DECLARED A PUBLIC HIGHWAY BY RESOLUTION
OF THE BOARD OF ALDERMEN
September 10. 1924.

360.00



OFFICE No.	22831
DRAWER	81
SHEET	J-63