

PROVIDENCE, R.I.  
CITY ENGINEER'S OFFICE  
STREET LINE DEPT.

Aug. 13, 1924

047178

Note. The portion of Richardson Street ordered to be opened and repaired is indicated by the letters ABCDEFGHI, and agrees with the plat recorded in plat book 35 on page 86 in the office of the Recorder of Deeds.

The portion of Richardson Street declared useless and abandoned as a public highway is indicated by the letters JIKE, and agrees with the plat, 046785, on file in the office of the City Engineer.

# PLAT OF RICHARDSON STREET

FROM LEVINA ST. TO OCEAN ST.

SCALE 50 FEET PER INCH.

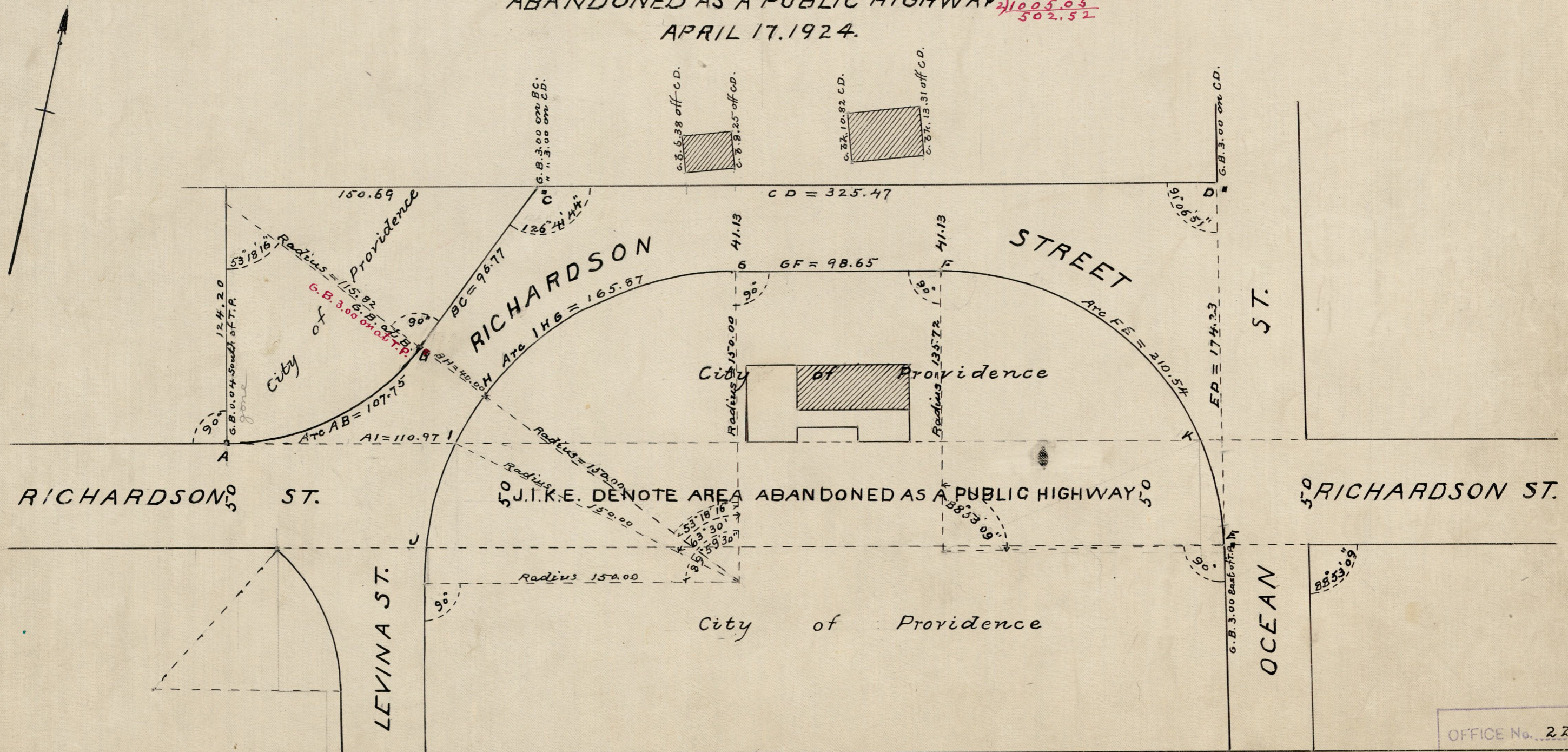
PORTION ORDERED TO BE OPENED AND REPAIRED

APRIL 3, 1924.

PORTION DECLARED USELESS AND  
ABANDONED AS A PUBLIC HIGHWAY

APRIL 17, 1924.

107.75	165.87
96.77	98.65
325.47	210.54
529.99	475.06
775.06	
31005.05	
502.52	



OFFICE No. 22808  
DRAWER 81  
SHEET J-60