

NOTE, The area established as a public highway is indicated by the letters ABCD.

The lines thus fixed agree with the map on which Payton Street was originally platted, namely; "Plat of House Lots on the Old Pawtuxet Road belonging to Francis Haswill," etc, a copy of which can be found on plat card 267 in the office of the Recorder of Deeds.

PLAT OF PAYTON STREET

AS PLATTED

FROM

EASTERLY LINE OF CACTUS ST.

TO ROGER WILLIAMS PARK

SCALE 30 FEET PER INCH

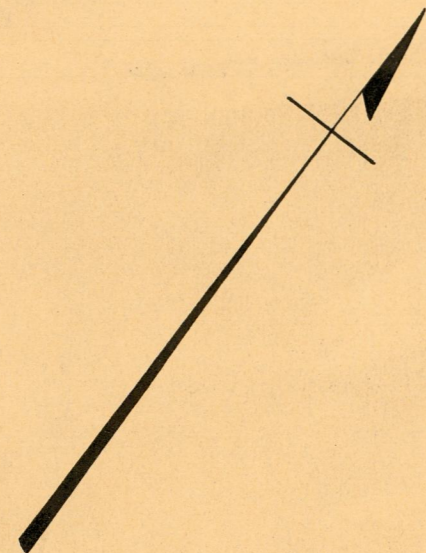
Established as a Public Highway

by Resolution of the

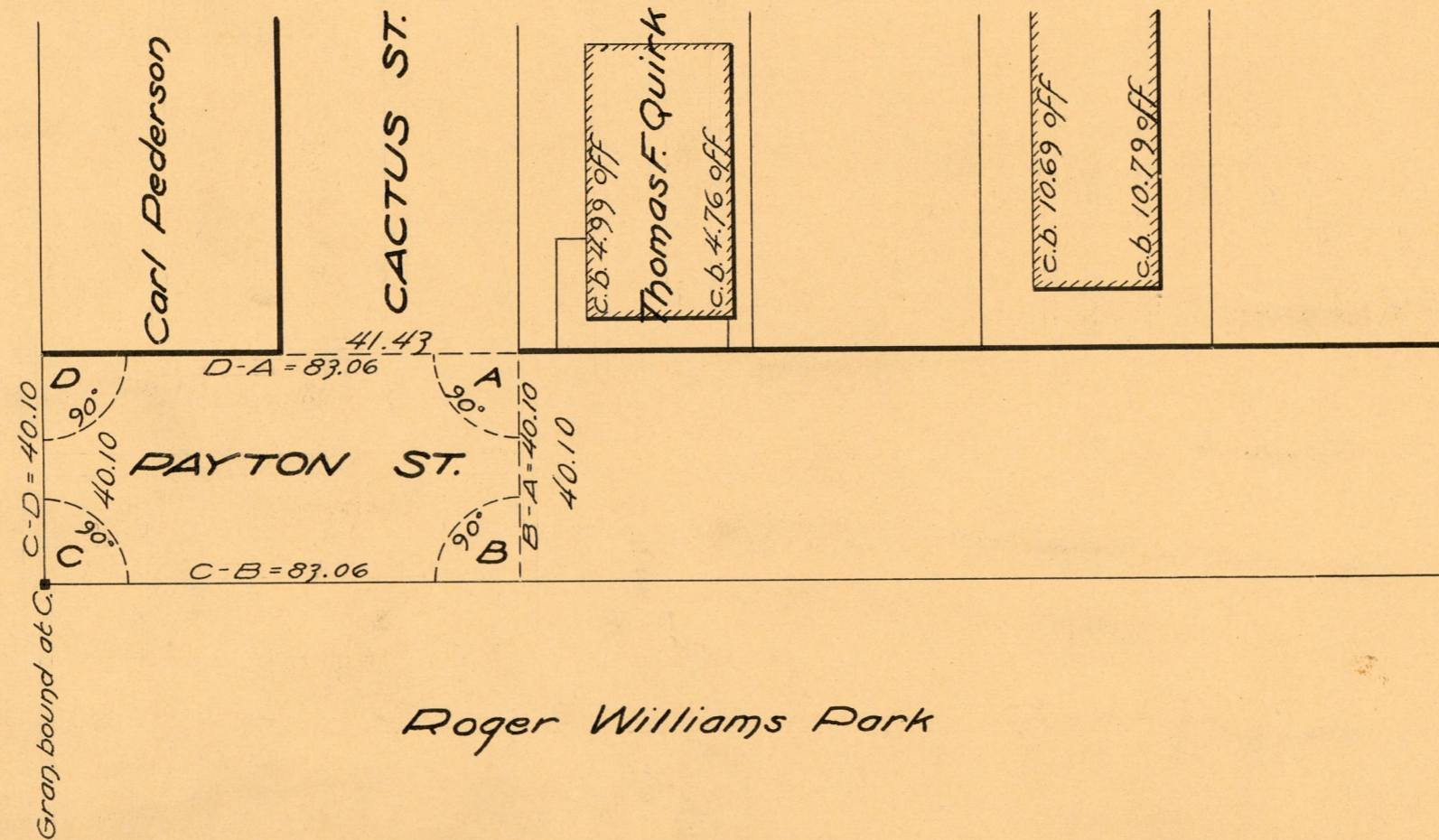
Board of Alderman

February 16, 1922

Witness..... City Clerk



Roger Williams Park



Roger Williams Park

OFFICE No.	22282
DRAWER	81
SHEET	J-6