

Aug. 2, 1924.

047160

PLAT OF EMELINE STREET

FROM ELMGROVE AVE. TO WAYLAND AVE.

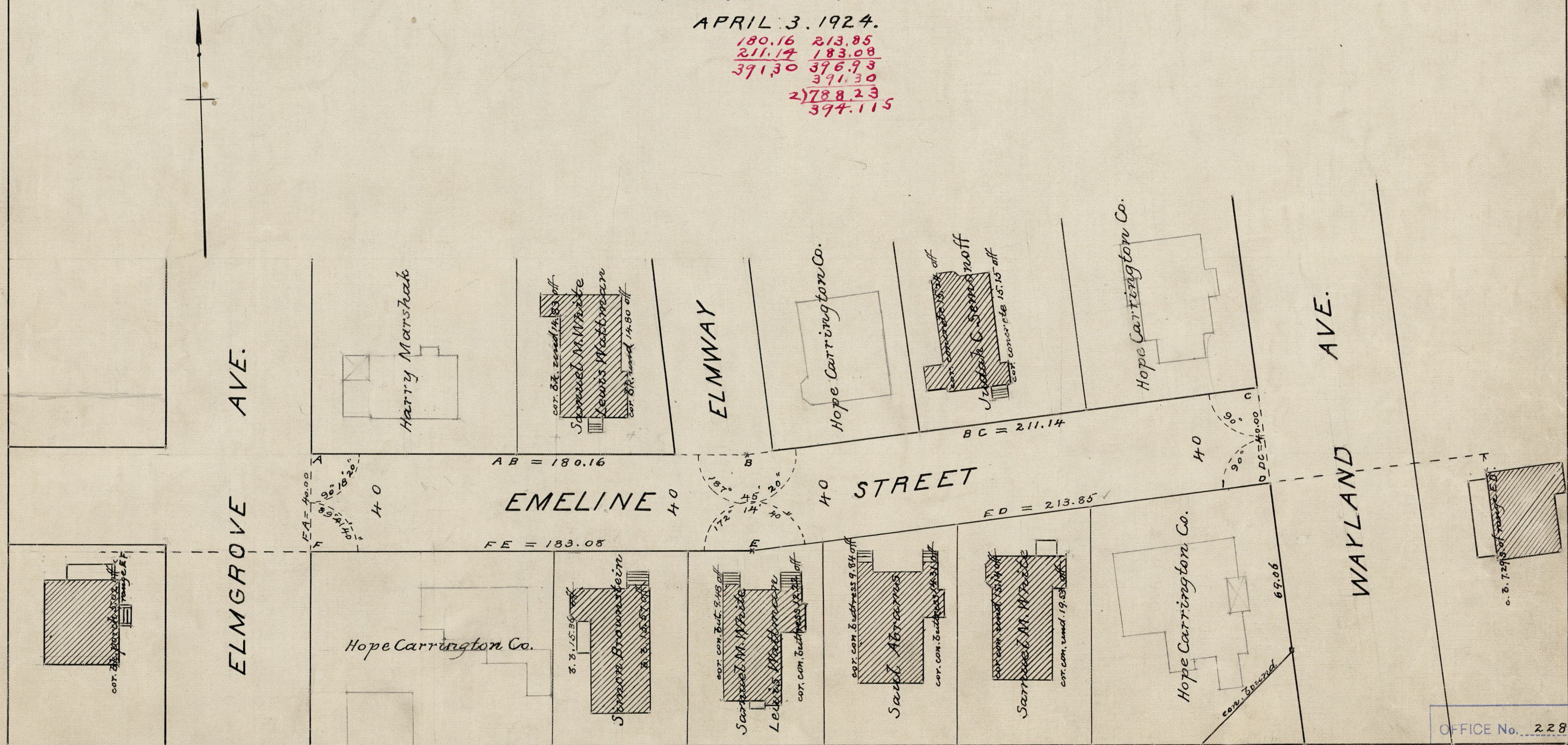
SCALE 40 FEET PER INCH.

OPENED AND REPAIRED BY RESOLUTION
OF THE BOARD OF ALDERMEN

APRIL 3, 1924.

180.16	213.85
211.14	183.08
391.30	396.93
	371.30
	2)788.23
	394.115

Note. The area opened and repaired is indicated by the letters ABCDEF.
The lines of Emeline Street agree with the "Elmway Plat" recorded on plat card 1073 in the office of the Recorder of Deeds.



OFFICE No. 22897
DRAWER " 81
SHEET " J-59