

Aug. 2, 1924

047159

PLAT OF ELMWAY

FROM ELMGROVE AVE TO EMELINE ST.

SCALE 40 FEET PER INCH.

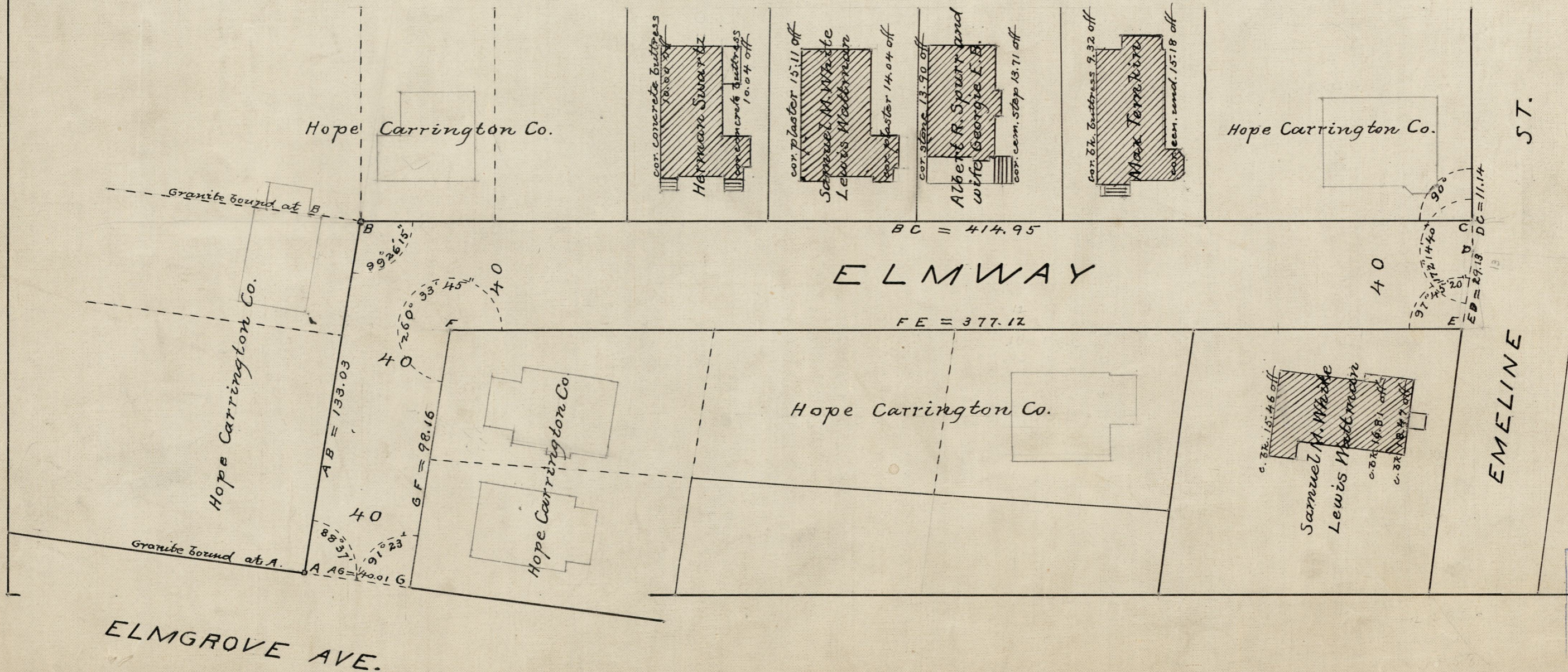
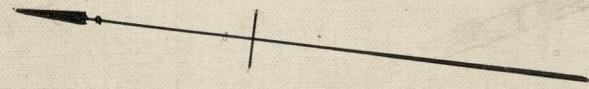
DECLARED A PUBLIC HIGHWAY BY RESOLUTION OF
THE BOARD OF ALDERMEN

JUNE 19 1924.

133.03	98.16
714.95	377.12
547.98	775.28
	547.98
<hr/>	
2)1023.26	
511.63	

Note. The area declared a public highway is indicated by the letters ABCDEFG.

The lines of Elmway agree with the "Elmway Plat" recorded on plat card 1073 in the office of the Recorder of Deeds.



OFFICE No.	22806
DRAWN "	81
SHEET "	J-58