

PROVIDENCE, R.I.
CITY ENGINEER'S OFFICE
STREET LINE DEPT.

Sept. 30, 1924

047269

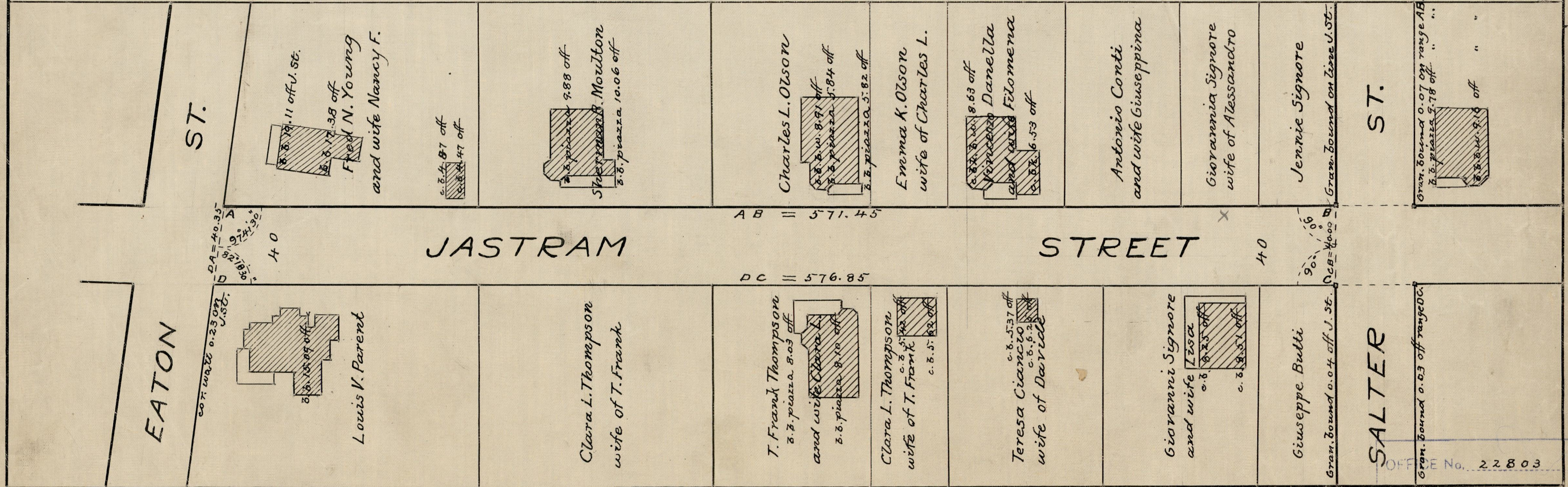
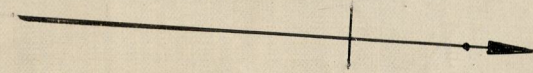
PLAT OF JASTRAM STREET

FROM EATON ST. TO SALTER ST.
SCALE 50 FEET PER INCH

ESTABLISHED AND DECLARED A PUBLIC HIGHWAY
BY RESOLUTION OF THE BOARD OF ALDERMEN

NOV. 20, 1924

571.45
576.85
2)1148.30
574.15



OFFICE No. 22803

DRAWER 81

SHEET J-57