

T.F.C. 2357-67

PROVIDENCE, R.I.
CITY ENGINEER'S OFFICE
STREET LINE DEPT.

Sept. 22, 1924

047254

PLAT OF

CACTUS STREET

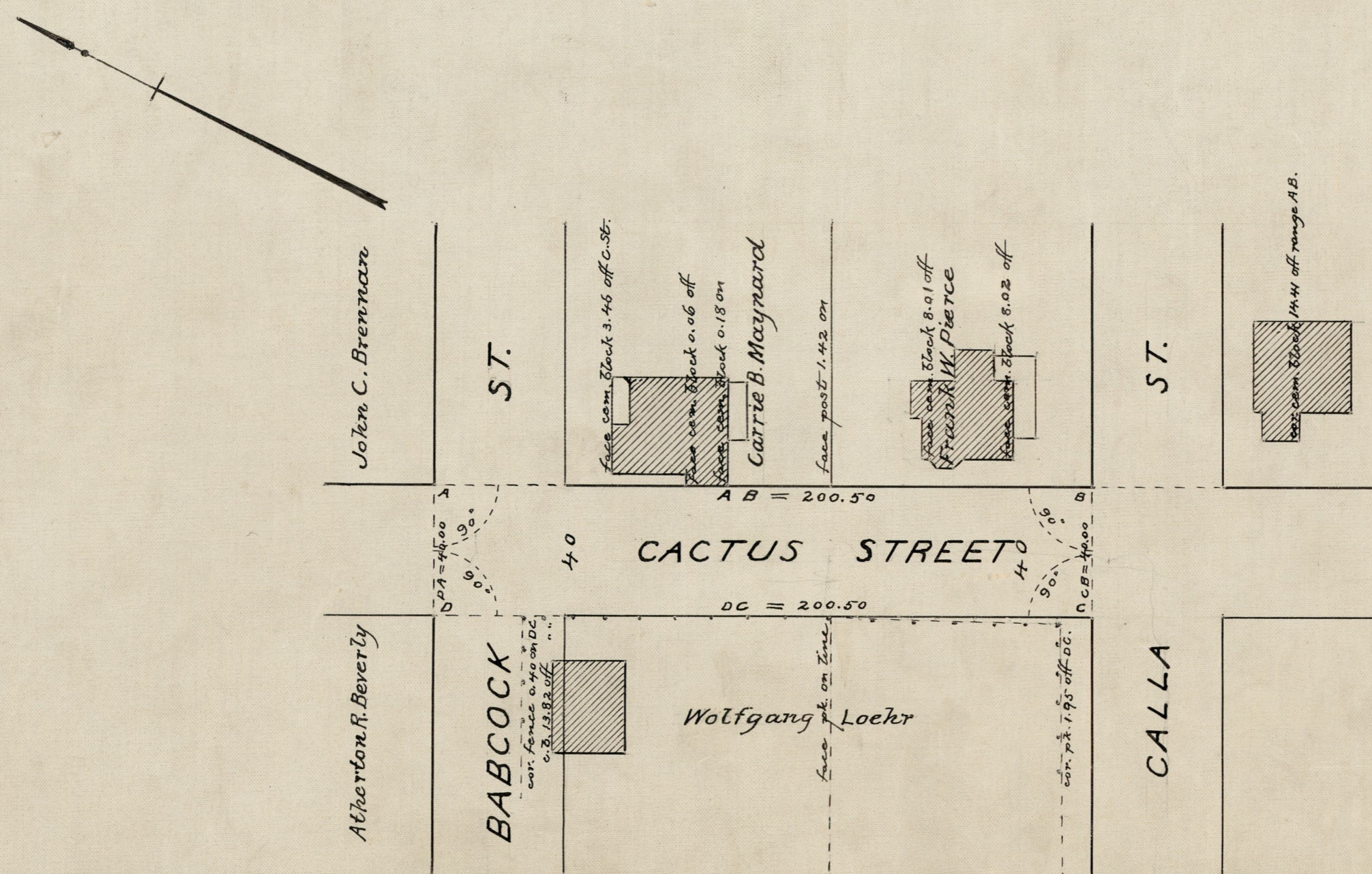
FROM NORTH LINE OF BABCOCK ST. TO CALLA ST.

SCALE 40 FEET PER INCH

ESTABLISHED AS A PUBLIC HIGHWAY BY RESOLUTION
OF THE BOARD OF ALDERMEN

OCT. 2, 1924.

200.50



OFFICE No.	22801
DRAWER	81
SHEET	J-55