

Sept. 22, 1924

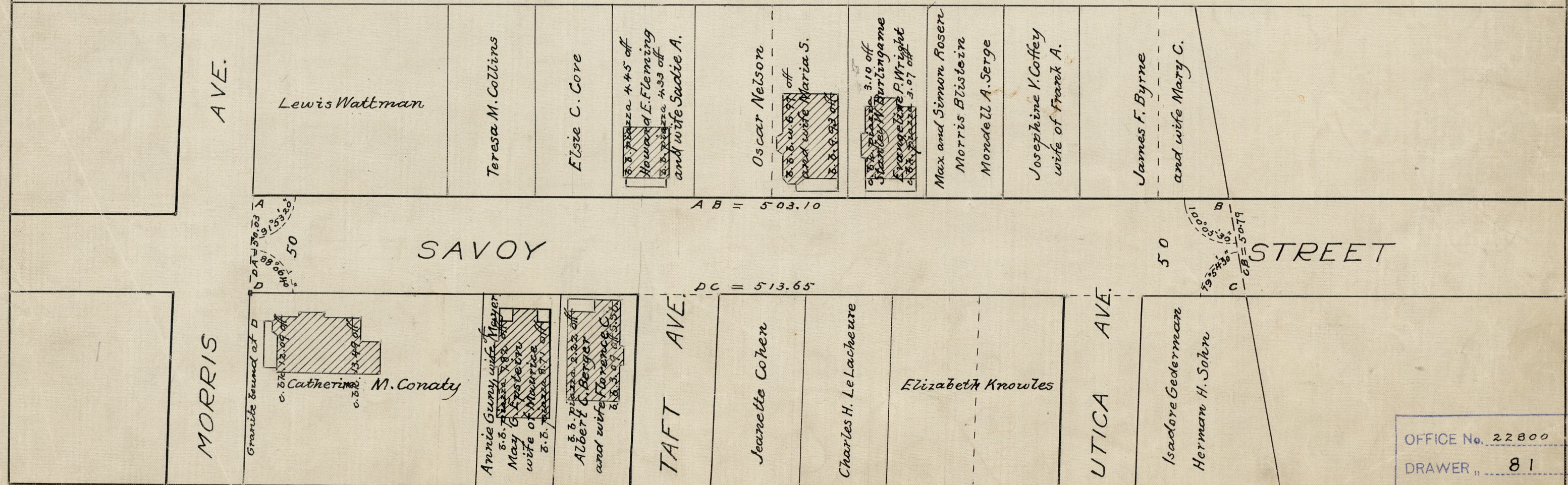
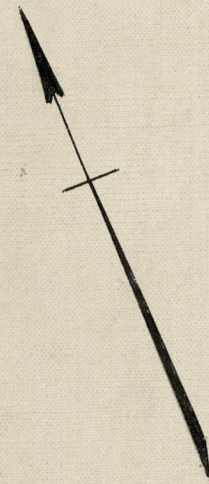
047255

PLAT OF
SAVOY STREET
FROM MORRIS AVE TO EAST LINE
OF PEMBROKE VILLA PLAT
SCALE 50 FEET PER INCH

DECLARED A PUBLIC HIGHWAY BY RESOLUTION OF
THE BOARD OF ALDERMEN

JULY 3, 1924

503.10
513.65
21016.75
508.375



OFFICE No.	22800
DRAWER	81
SHEET	J-54