

PROVIDENCE, R.I.
CITY ENGINEER'S OFFICE
STREET LINE DEPT.

Sept. 2, 1924.

047207

PLAT OF TAFT AVENUE

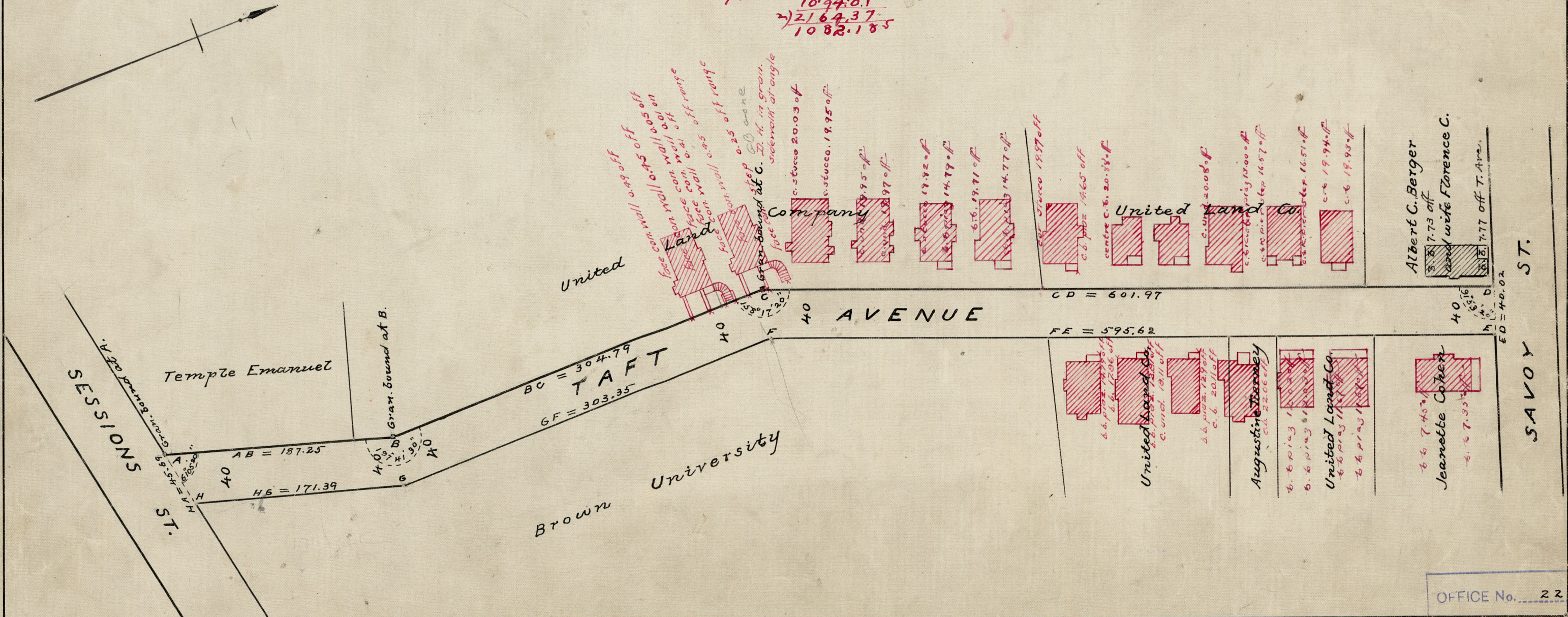
FROM SESSIONS ST. TO SAVOY ST.

SCALE 80 FEET PER INCH.

DECLARED AND ESTABLISHED A PUBLIC HIGHWAY
BY RESOLUTION OF THE BOARD OF ALDERMEN

SEPT. 4, 1924.

187.25	171.39
304.79	303.35
601.97	595.62
1094.01	1070.36
	1094.01
	2164.37
	1082.185



OFFICE No.	22799
DRAWER	81
SHEET	J-53