

PROVIDENCE, R.I.
CITY ENGINEER'S OFFICE

STREET LINE DEPT.

May 14, 1924.

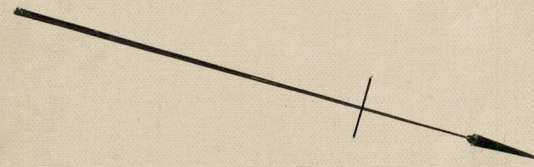
046942

PLAT OF LORRAINE AVENUE

FROM LLOYD AVE. TO PRESIDENT AVE.
*Declared a public highway by Resolution of the
Board of Aldermen
May 15, 1924.*

SCALE 40 FEET PER INCH.

343.52

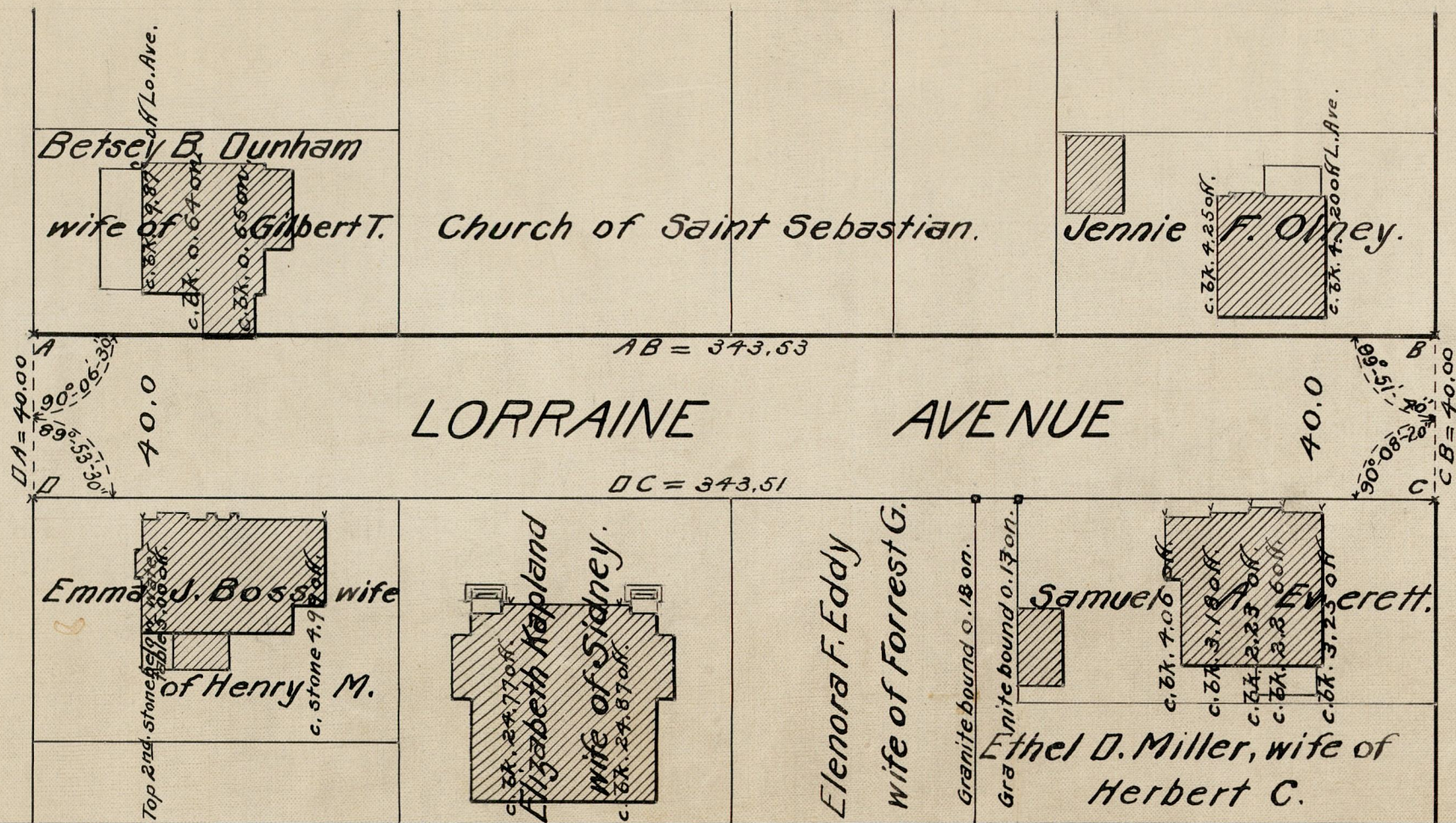


LLOYD AVE.

PRESIDENT AVE.

LLOYD AVE.

PRESIDENT AVE.



OFFICE No.	22797
DRAWER	81
SHEET	J-51