

PROVIDENCE, R.I.
CITY ENGINEER'S OFFICE
STREET LINE DEPT.

July 1, 1924

047057

PLAT OF

GRAY STREET

FROM CHALKSTONE AVE. SOUTHERLY
TO THE PORTION ALREADY RECEIVED.
SCALE 50 FEET PER INCH.

DECLARED AND ESTABLISHED A PUBLIC HIGHWAY
BY RESOLUTION OF THE BOARD OF ALDERMEN

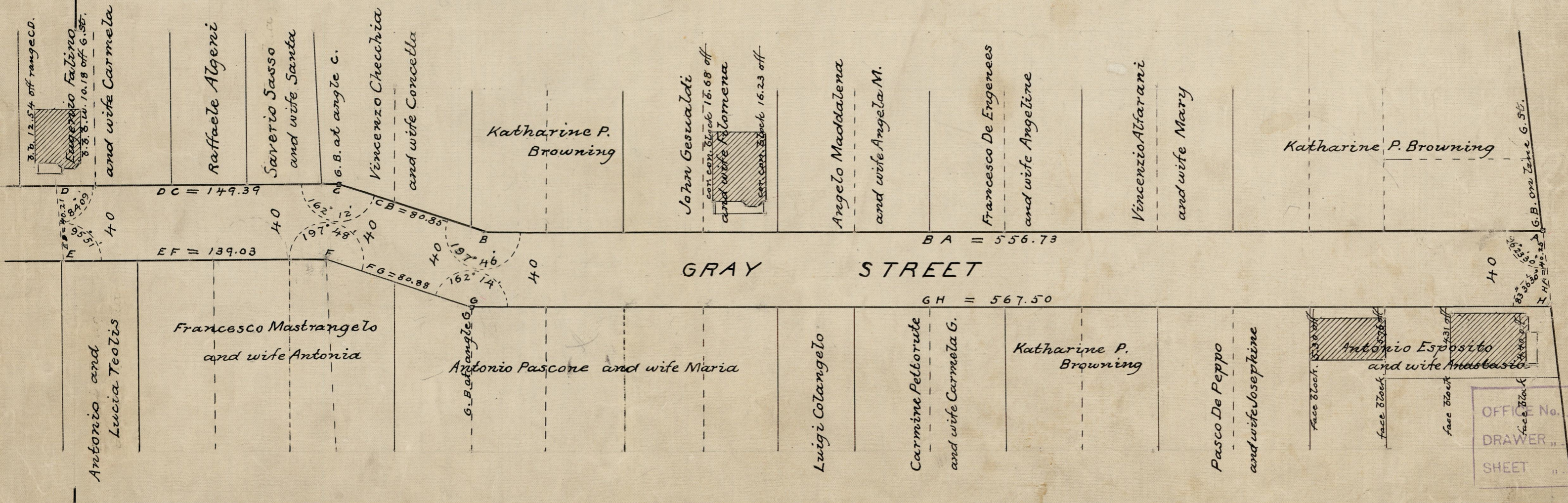
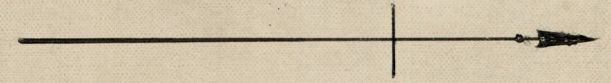
JULY 3, 1924.

149.39	139.03
80.85	80.88
556.73	567.50
786.97	787.41
	786.97
	2) 1574.38
	787.19

Witness _____
City Clerk.

Note. The area declared and established a public highway is indicated by the letters ABCDEFGH.

The lines thus defined agree with the "Summerdale Plat" recorded on plat card 1035, and with the "Plat of House Lots belonging to Heirs of John Williams" recorded on plat card 448 in the office of the Recorder of Deeds.



OFFICE No.	22745
DRAWER	81
SHEET	1-50

CHALKSTONE AVE.