

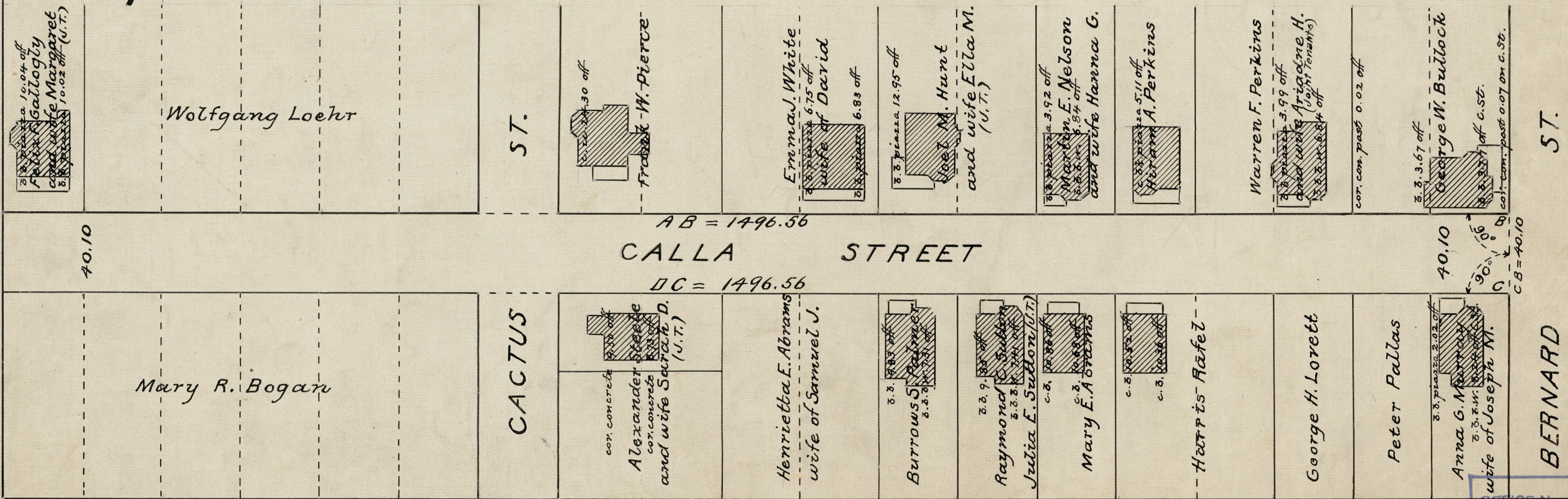
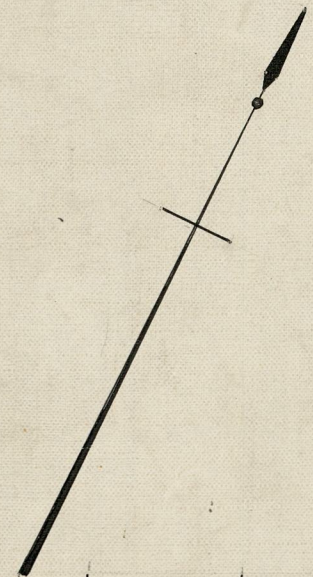
For note, see sheet one.

PLAT OF  
**CALLA STREET**  
 FROM ROGER WILLIAMS PARK TO BERNARD ST.  
 IN TWO SHEETS  
 SCALE 50 FEET PER INCH.

Established as a public highway by Resolution of the  
 Board of Aldermen  
 May 1, 1924.

PROVIDENCE, R.I.  
 CITY ENGINEER'S OFFICE  
 STREET LINE DEPT.  
 May 2, 1924.  
 046903

Witness, \_\_\_\_\_  
 City Clerk.



OFFICE No. 22718  
 DRAWER " 81  
 SHEET " J-49