

Note: The area established as a public highway is indicated by the letters ABCD. The lines thus fixed conform with the "Francis Haswill Plat" recorded on Card 264 in the office of the Recorder of Deeds.

PLAT OF CALLA STREET

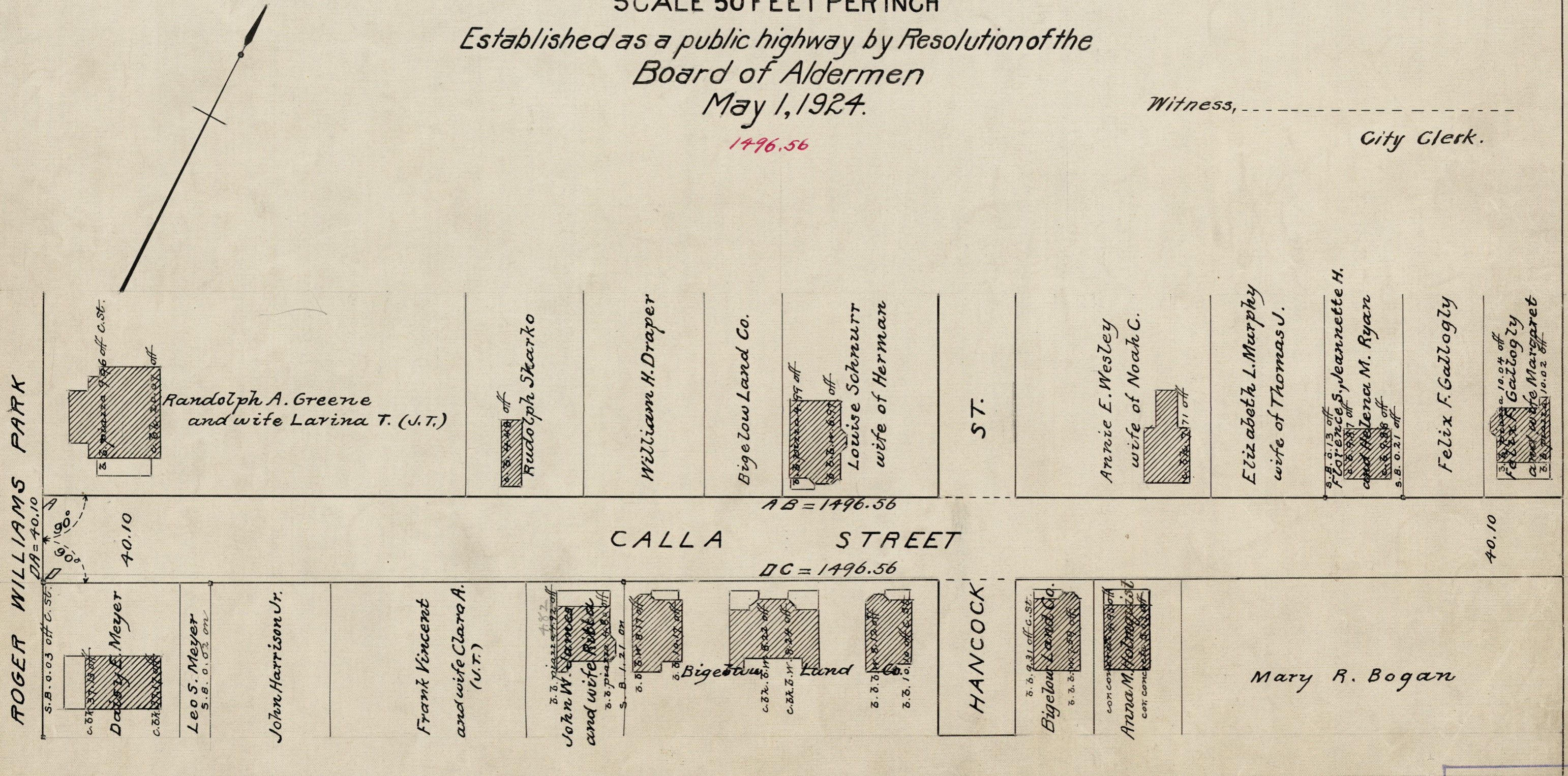
FROM ROGER WILLIAMS PARK TO BERNARD ST.
IN TWO SHEETS
SCALE 50 FEET PER INCH

Established as a public highway by Resolution of the
Board of Aldermen
May 1, 1924.

1496.56

PROVIDENCE, R.I.
CITY ENGINEER'S OFFICE
STREET LINE DEPT.
May 2, 1924.
046902

Witness, _____
City Clerk.



OFFICE No. 22717
DRAWER " 81
SHEET " J-48