

Note: The area established as a public highway is indicated by the letters ABCD.
The lines thus fixed conform with the "Francis Haswill Plat" recorded on Card 264, in the office of the Recorder of Deeds.

PLAT OF
CACTUS STREET

FROM CALLA ST. 80 FEET SOUTHERLY
SCALE 40 FEET PER INCH.

ESTABLISHED AS A PUBLIC HIGHWAY
BY RESOLUTION OF THE
BOARD OF ALDERMEN
May 1, 1924.

80.20

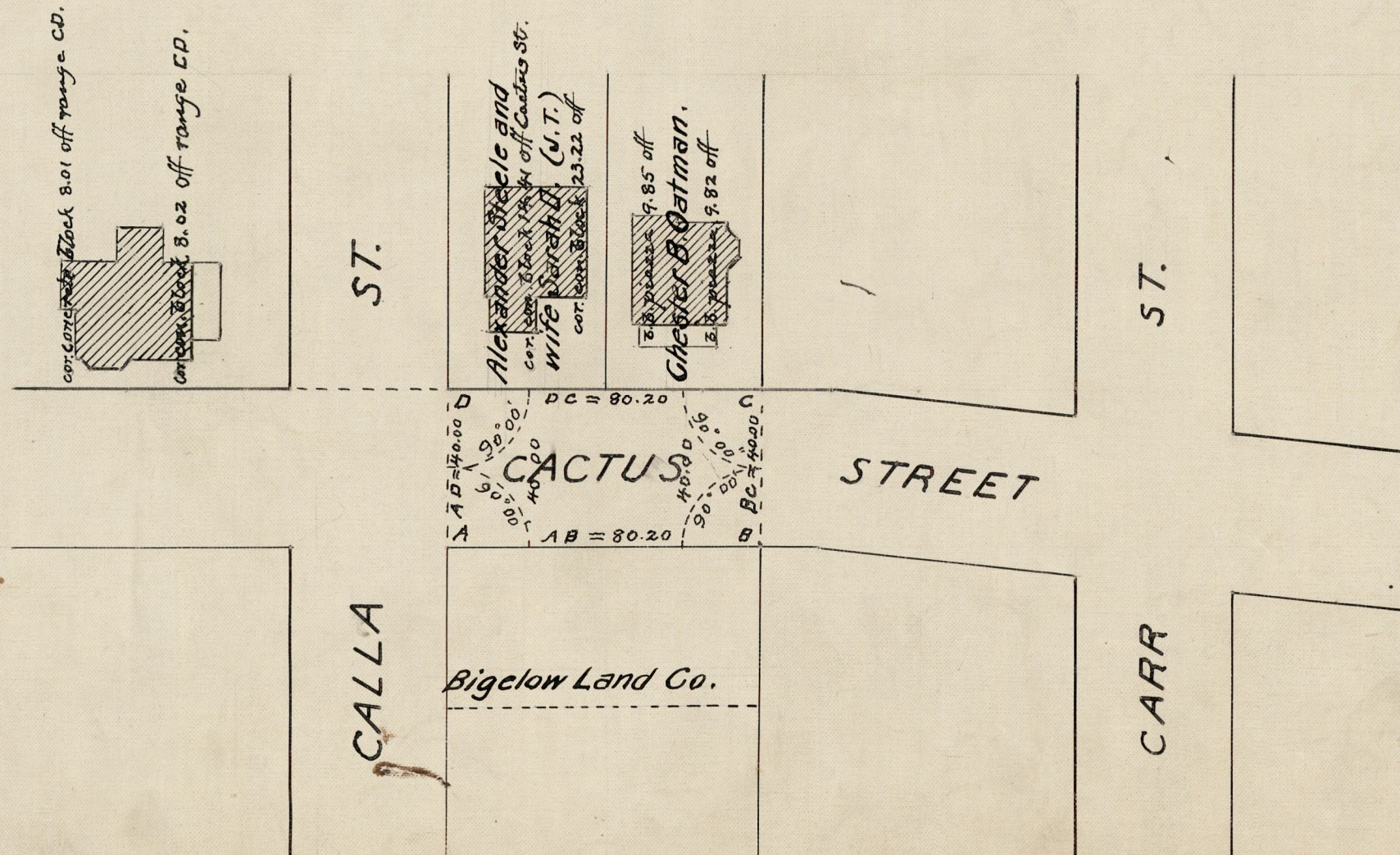
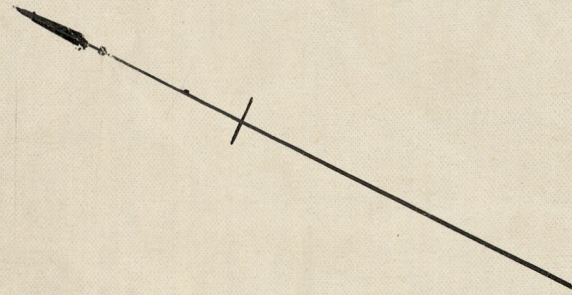
T. F. C. 2357-67

PROVIDENCE, R.I.
CITY ENGINEER'S OFFICE

STREET LINE DEPT.

May 2, 1924.

046900



OFFICE No. 22716
DRAWER " 81
SHEET " J-47